

People in business: The pain and the possible brain gain

Insights from modern neuroscience:

Professor P T Brown

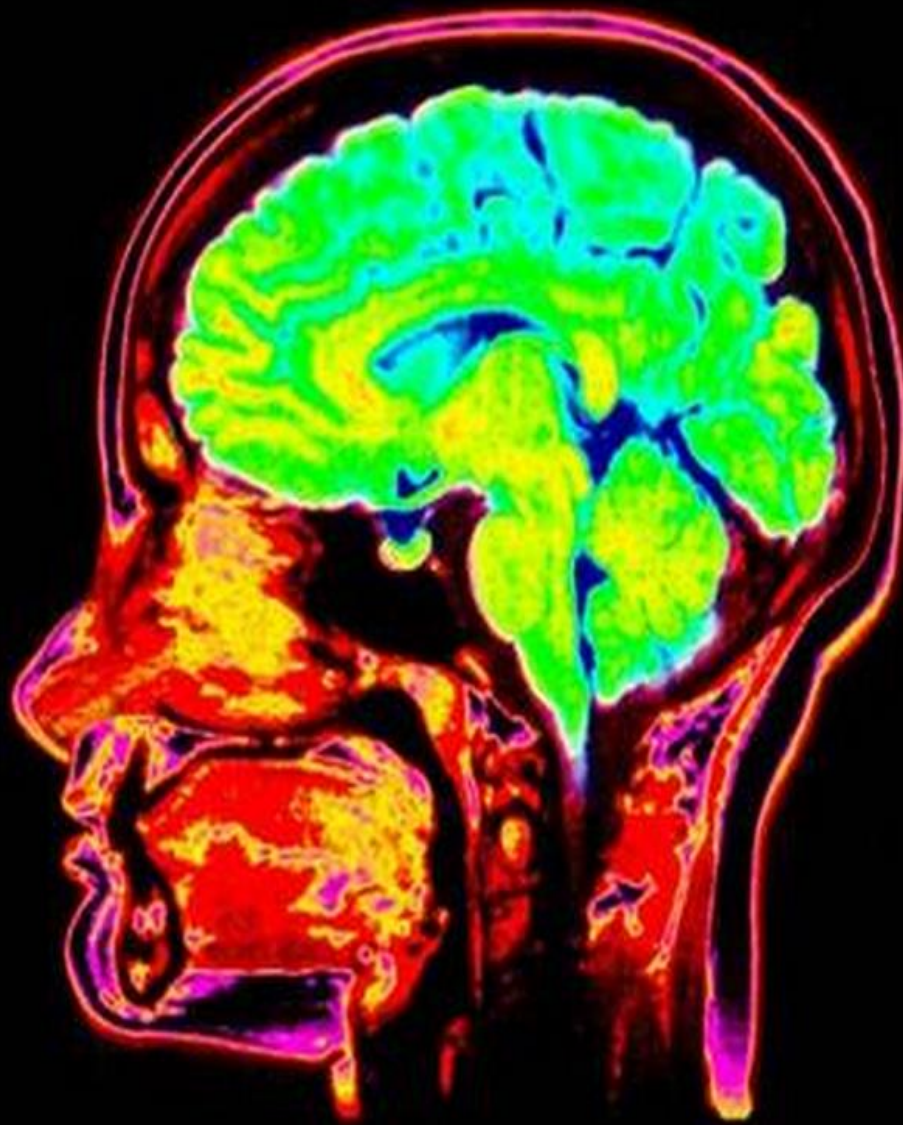
Honorary Chairman – Vietnam Consulting Group

Guest Lecture

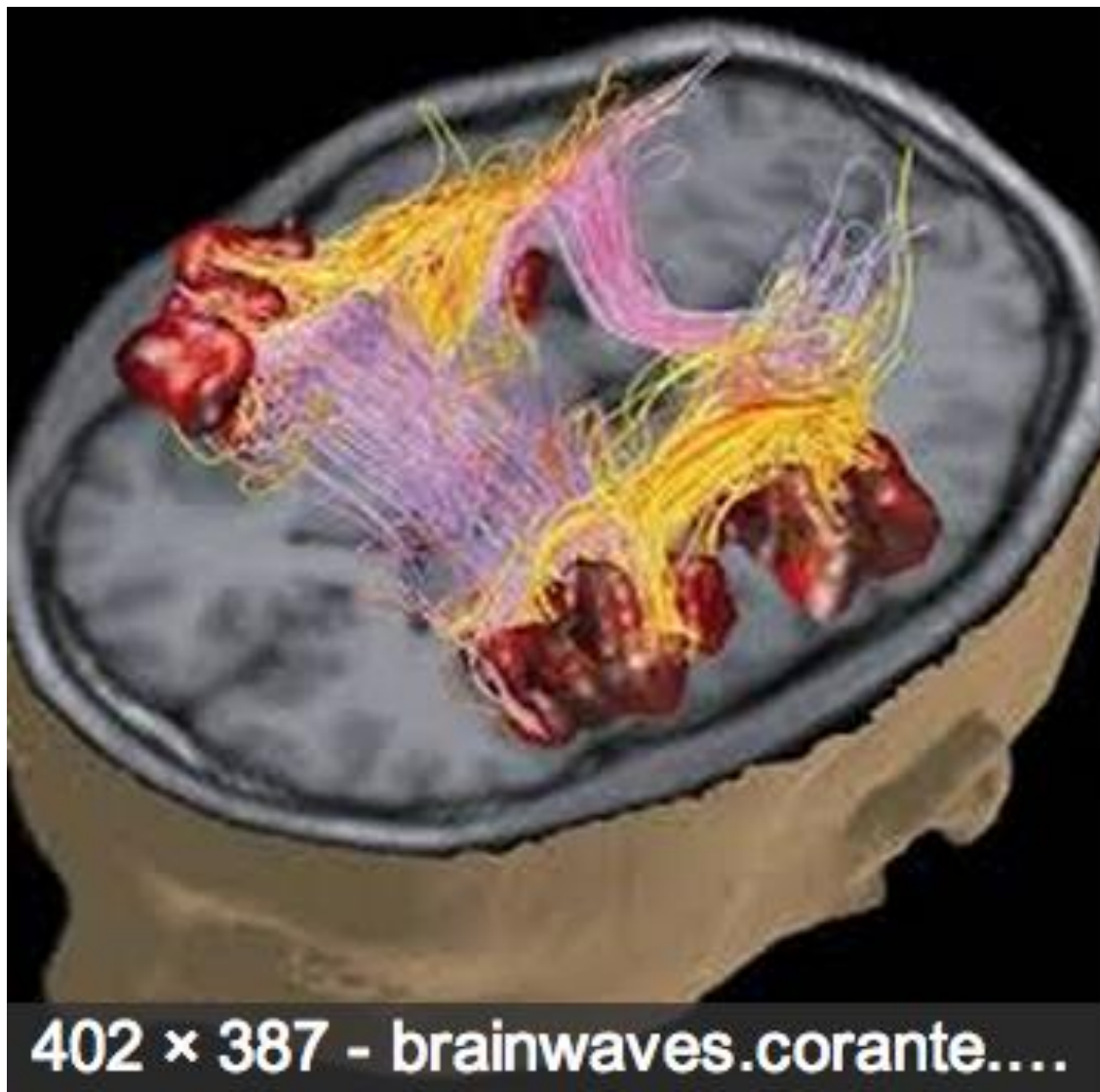
Fulbright Economics Teaching Program

Ho Chi Minh City:

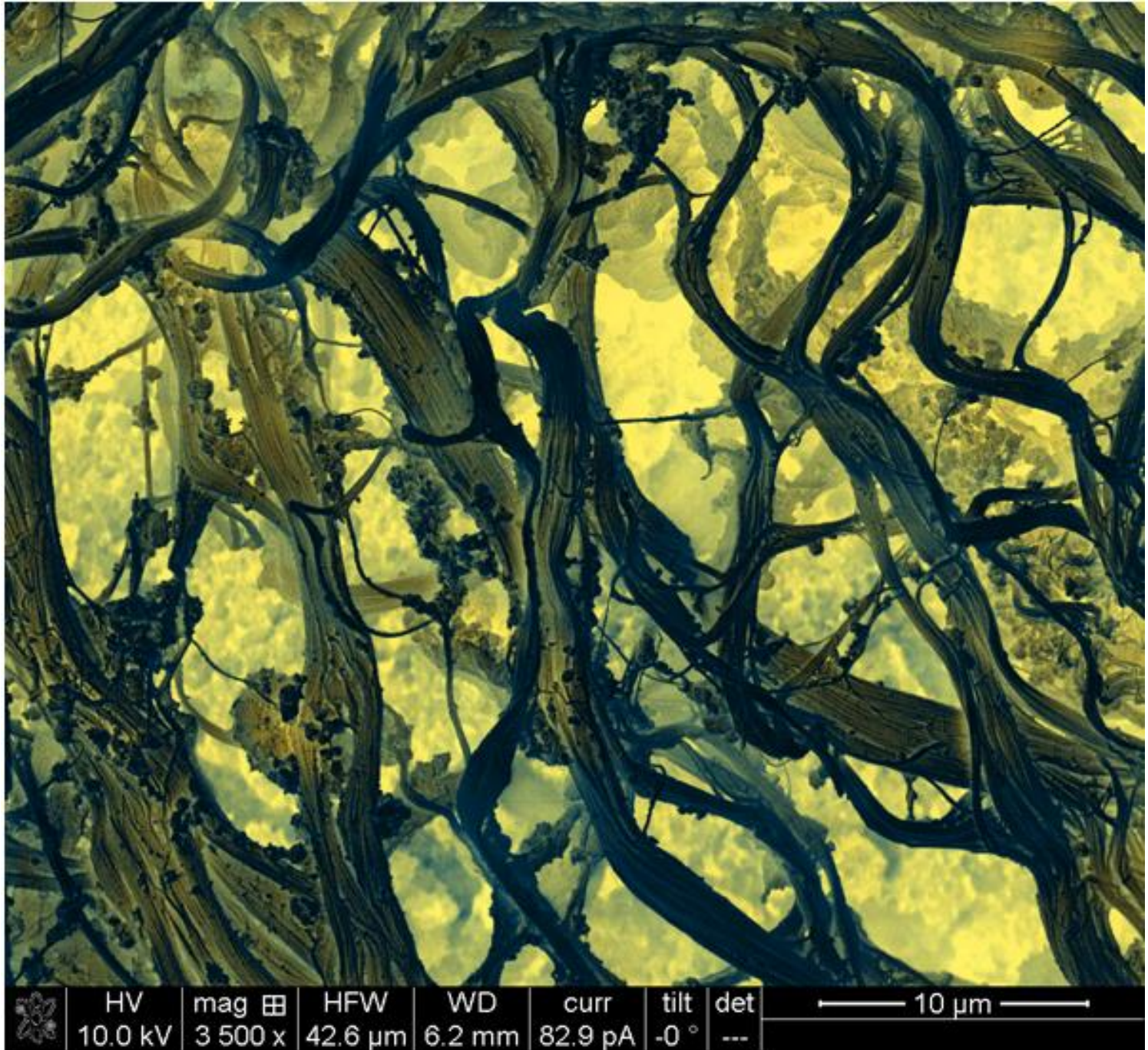
04 March 2015



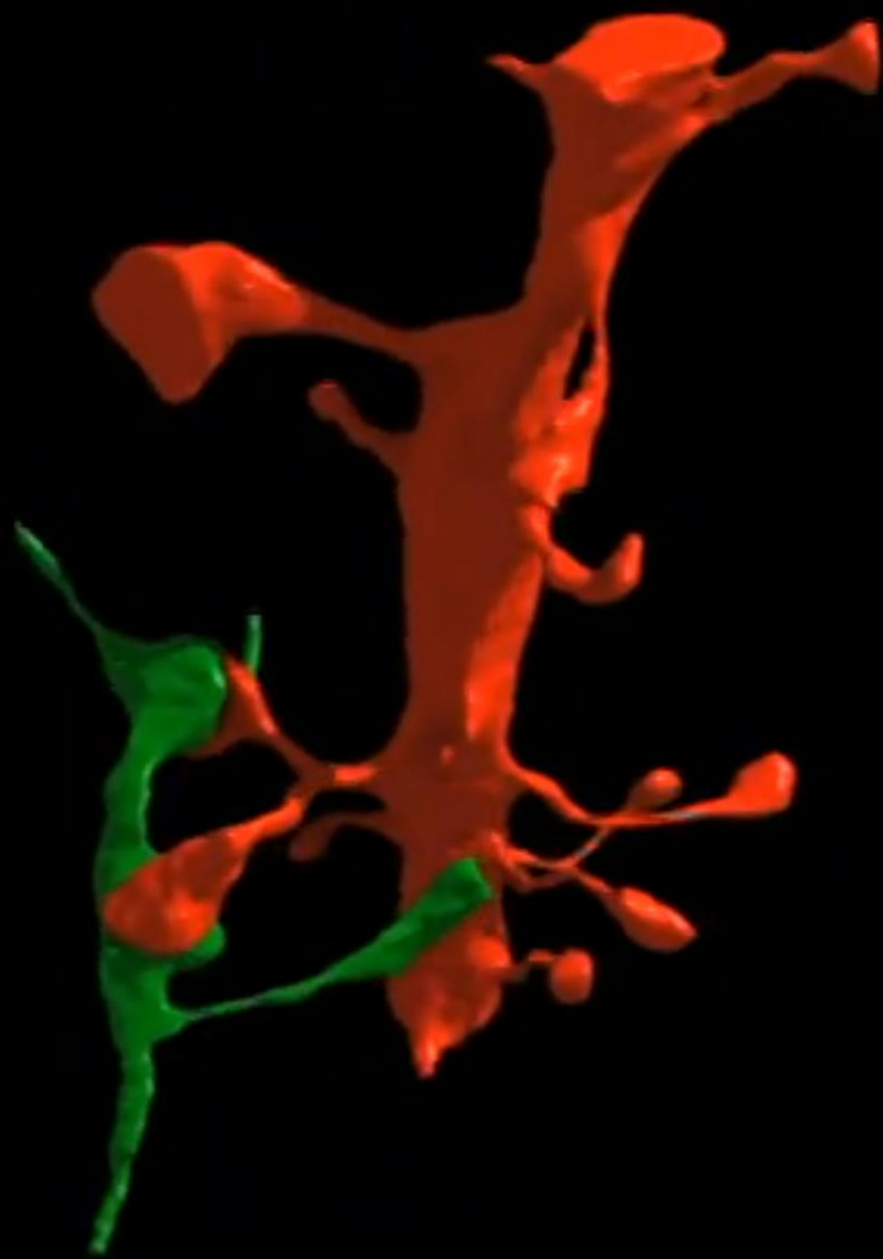
JOHN VON RADOWITZ - PUBLISHED 02 DECEMBER 2013 10:37 PM

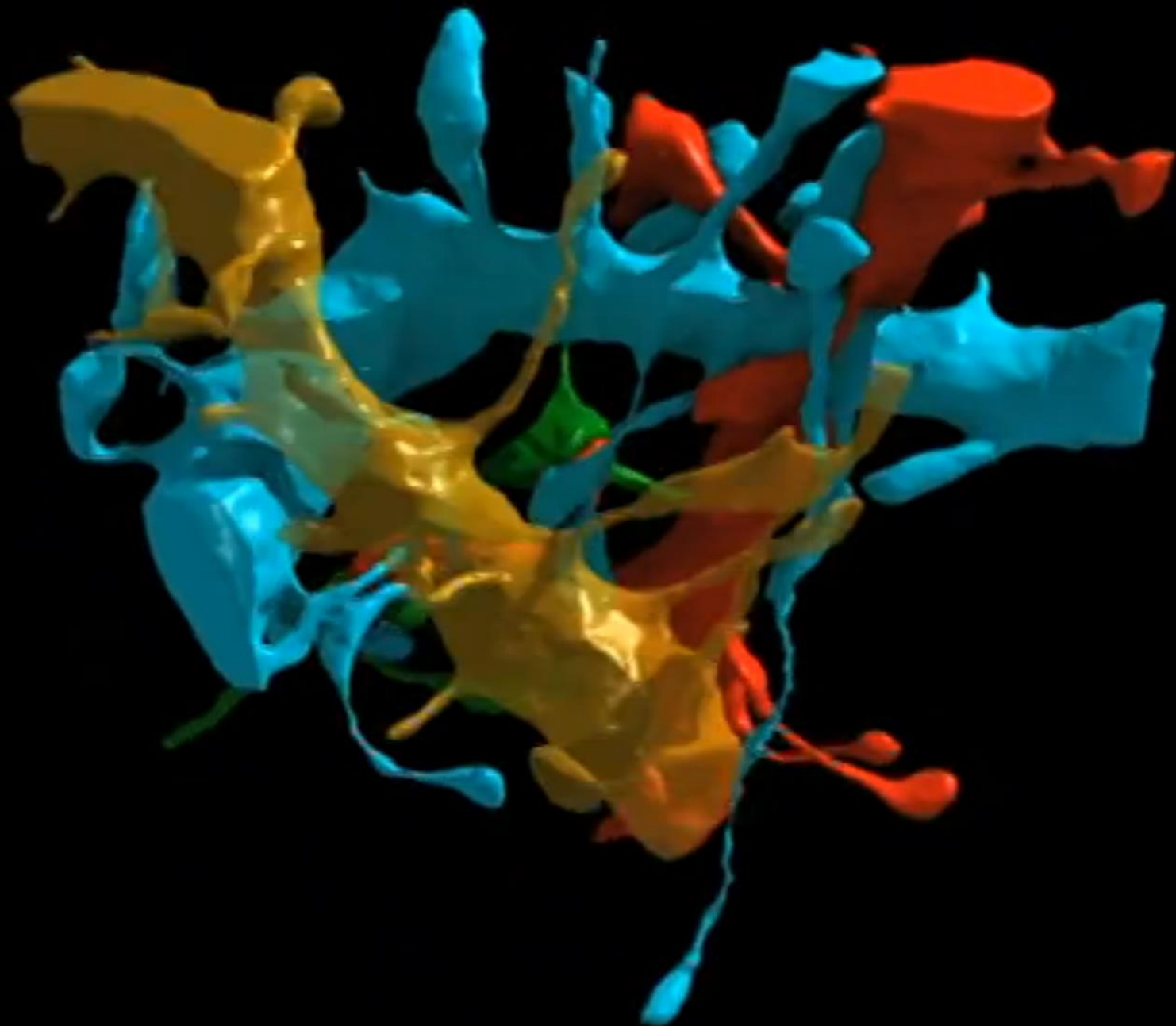


https://www.google.co.uk/search?q=connectome+project&client=safari&hl=en&source=lnms&tbm=isch&sa=X&ei=9hi9U_j3FbKB7QbVo4HgCQ&ved=0CAgQ_AUoAQ&biw=1024&bih=672#facrc=

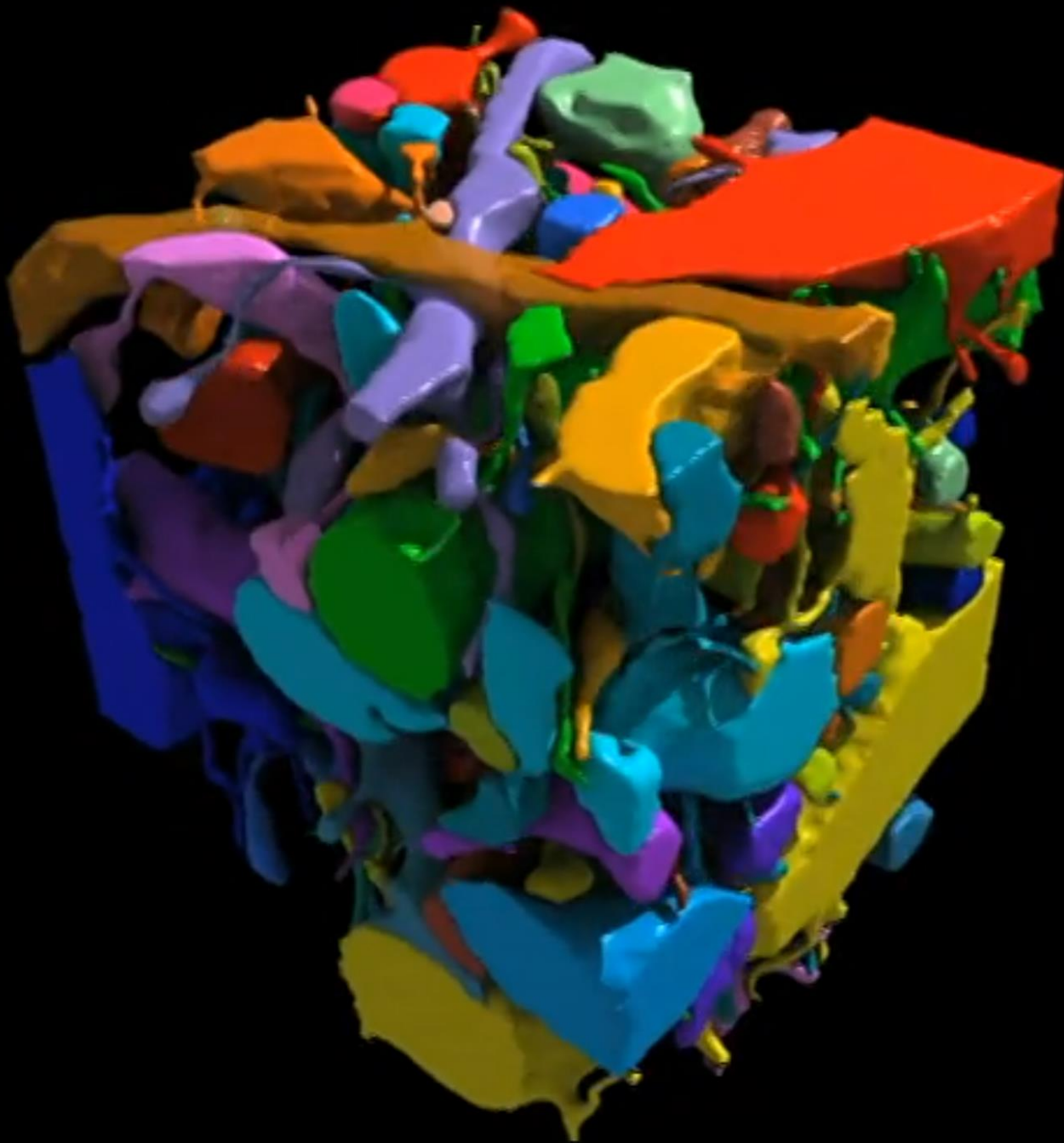


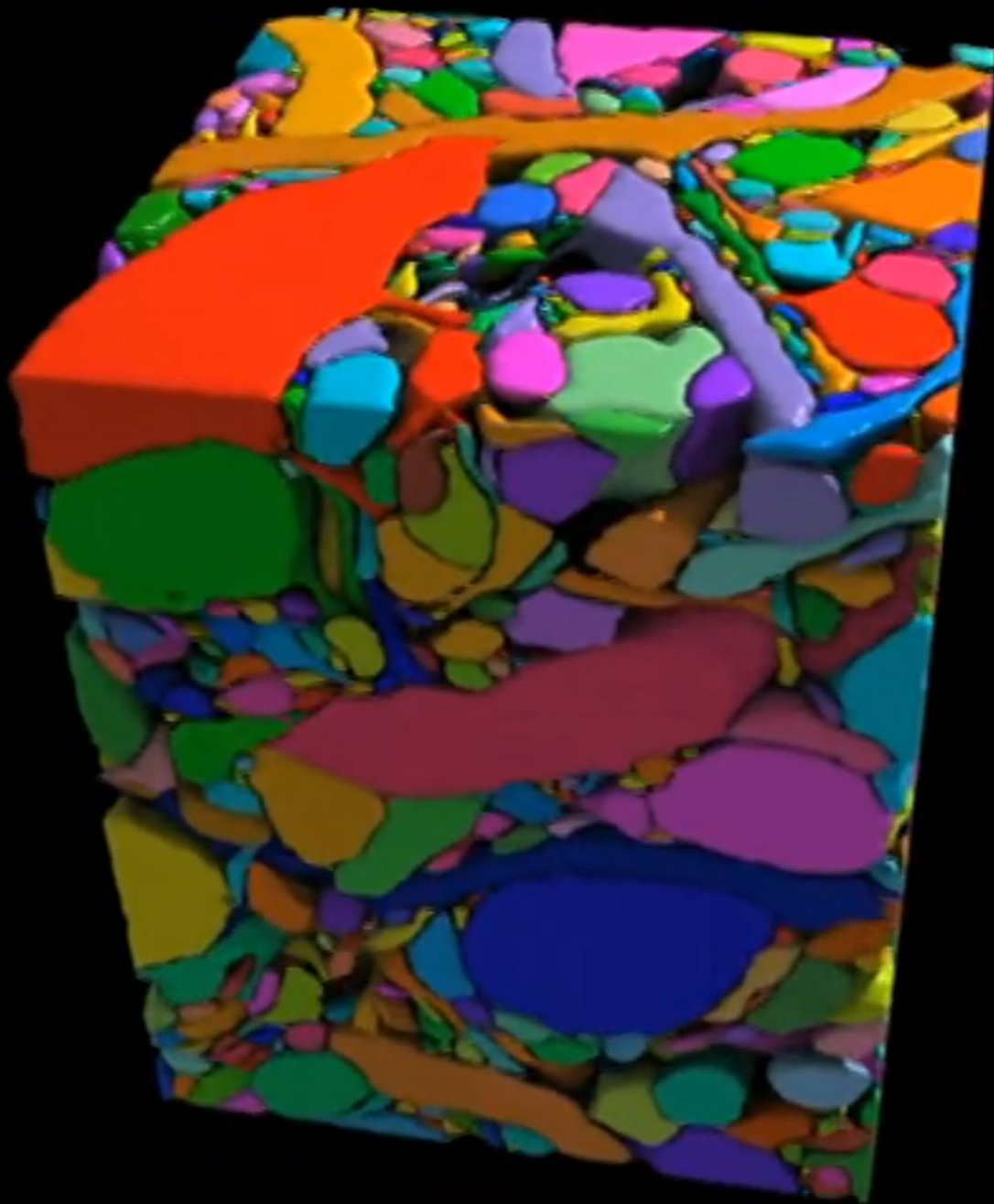
(Image: Badar Rashid, UCD)

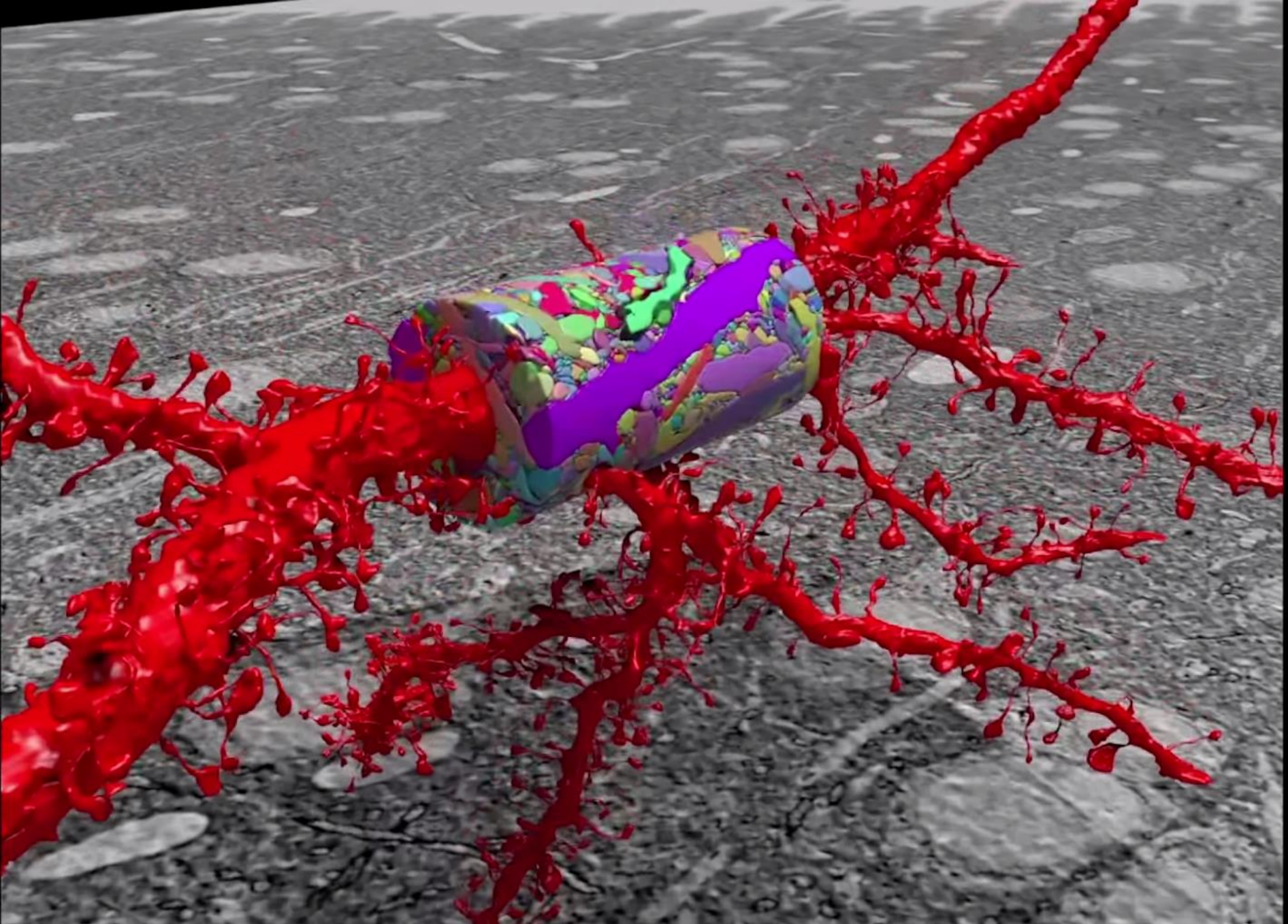


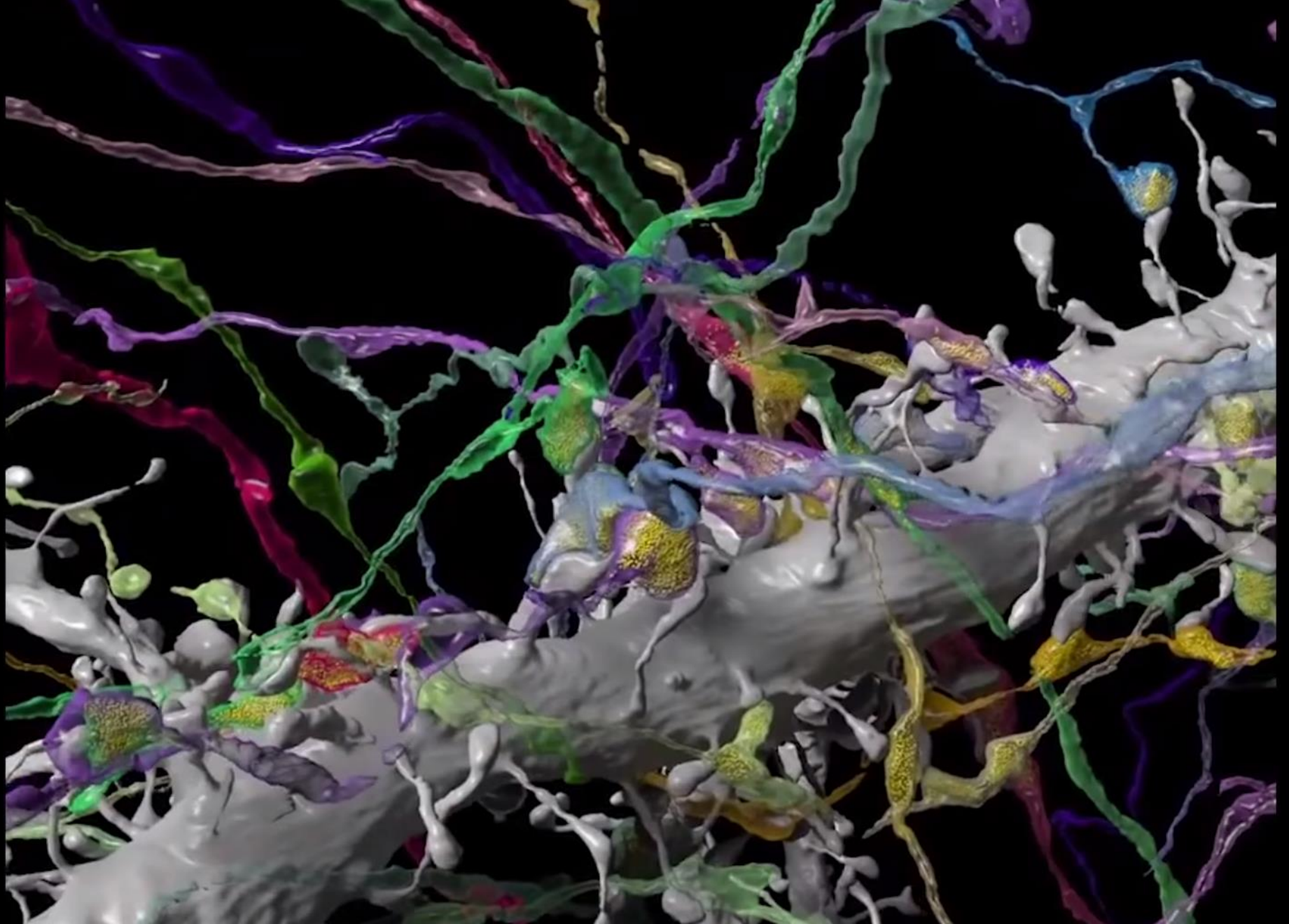




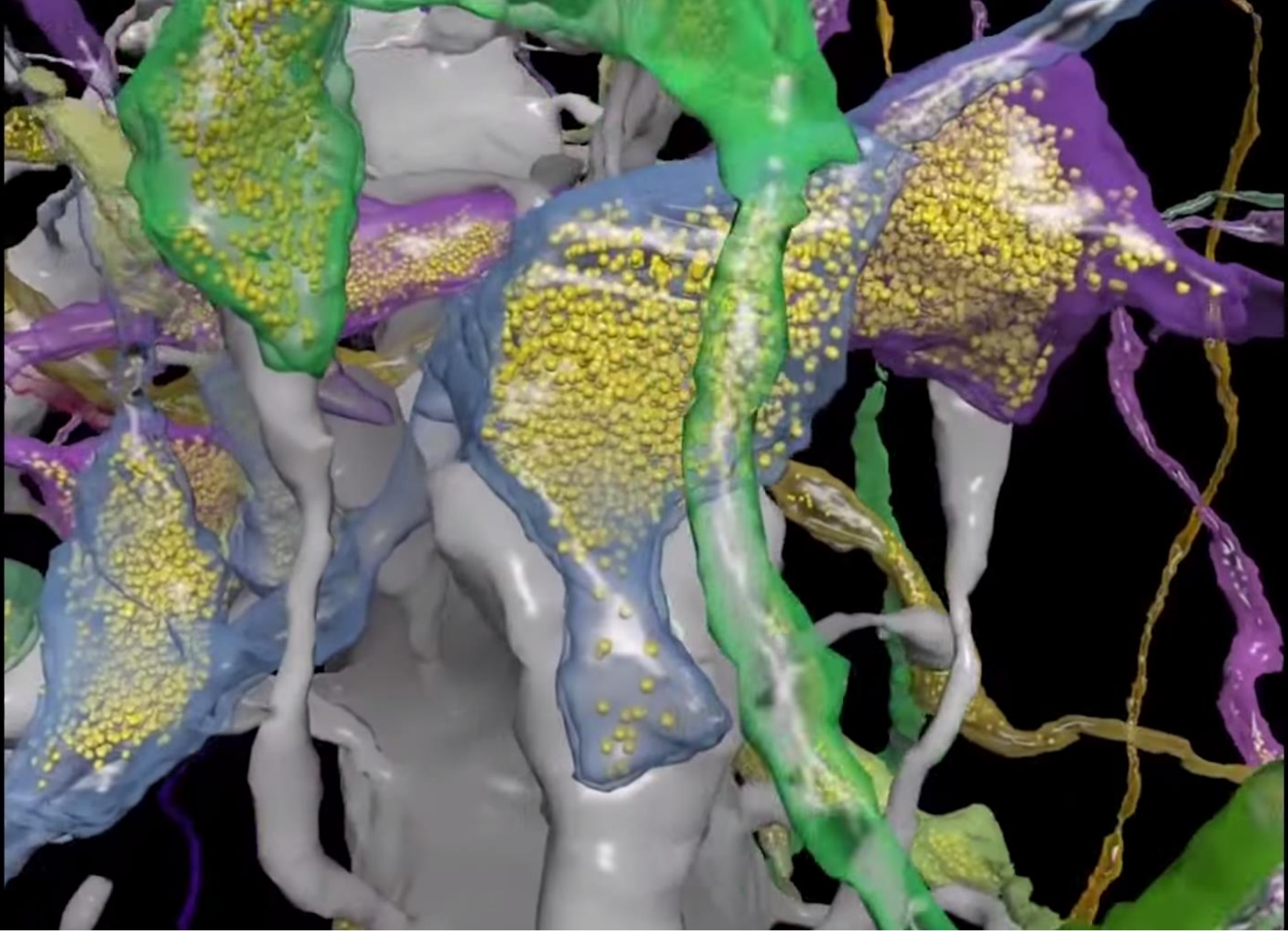




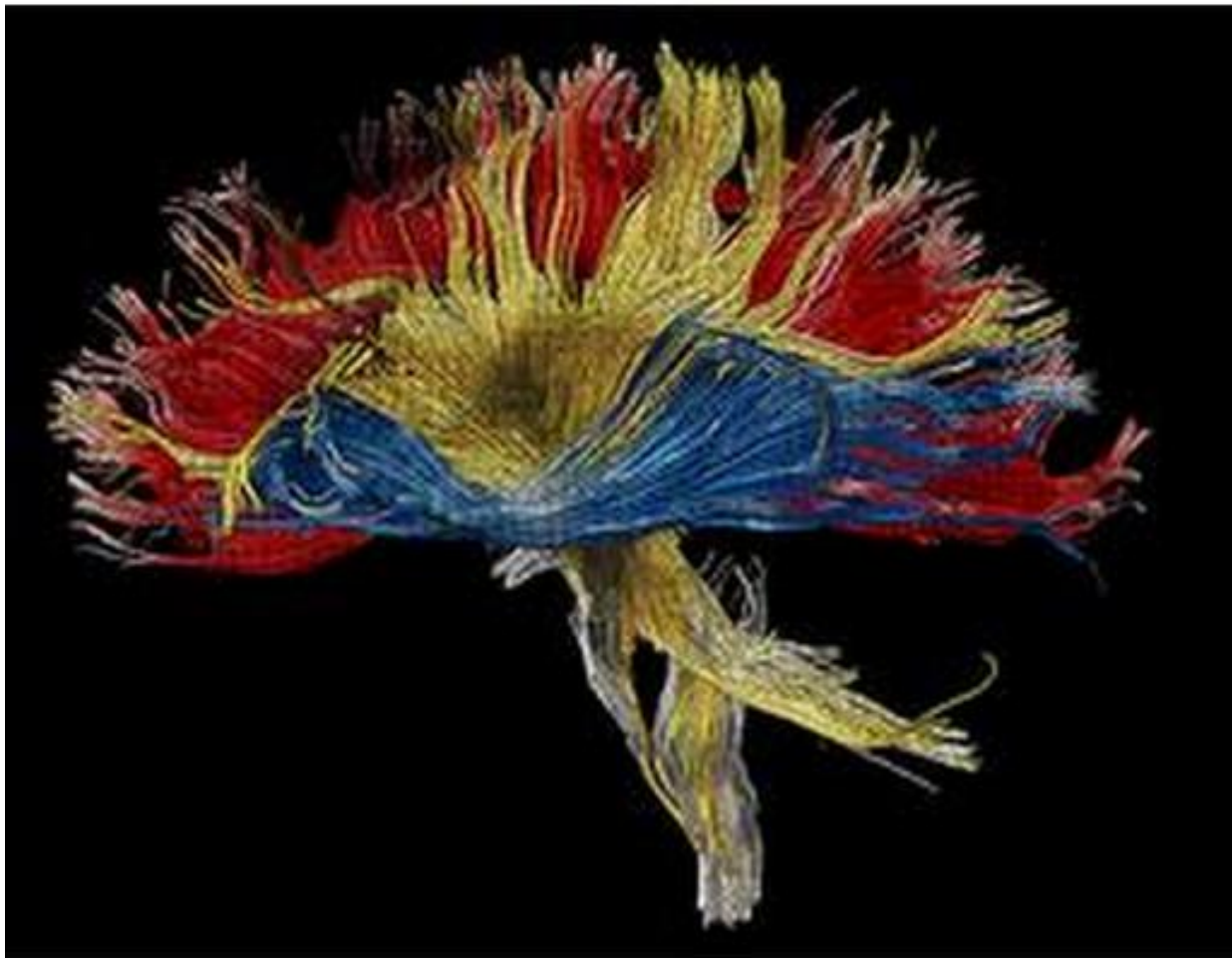




http://www.youtube.com/attribution_link?a=oHkBIaU_jfQ&u=/watch%3Fv%3D5Lc64j-Rsy4%26feature%3Dem-subs_digest



http://www.youtube.com/attribution_link?a=oHkBIAu_jfQ&u=/watch%3Fv%3D5Lc64j-Rsy4%26feature%3Dem-subs_digest



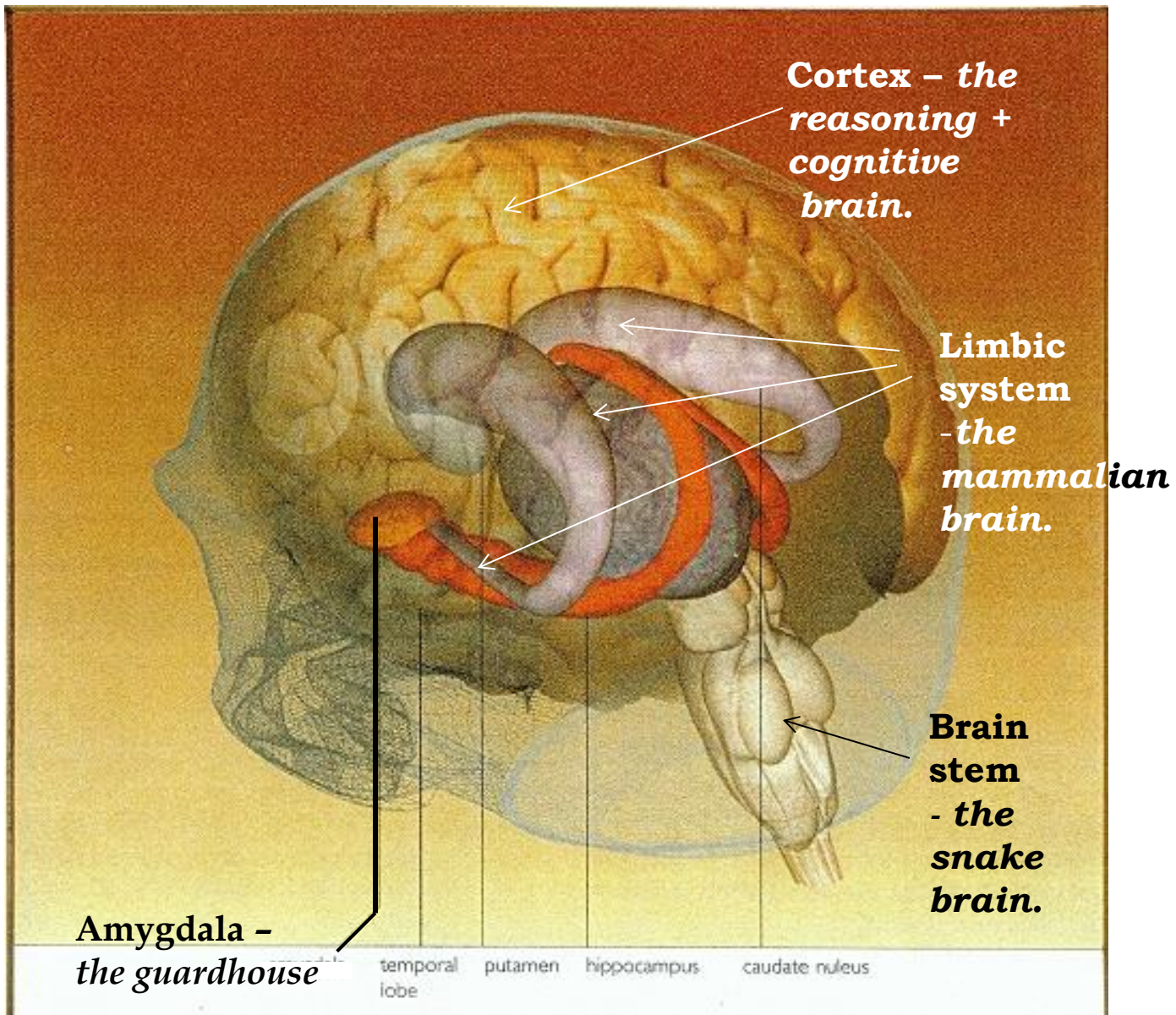


Your Brain by the Numbers

By Dwayne Godwin and Jorge Cham | November 17, 2012 | 25

Neurochemical factory:
Action triggered by electricity
releasing chemicals.





The TRIUNE BRAIN – Stem, Limbic system and Cortex.
 from Carter – *Mapping the Mind*.

8 Basic Emotions
+
the emotional basis
of all behaviour

Think of the basic emotions
like the 3 primary colours –

red, yellow, blue.

3 primary colours produce the
whole of the colour spectrum.

8 primary emotions produce
the whole of the feeling system.

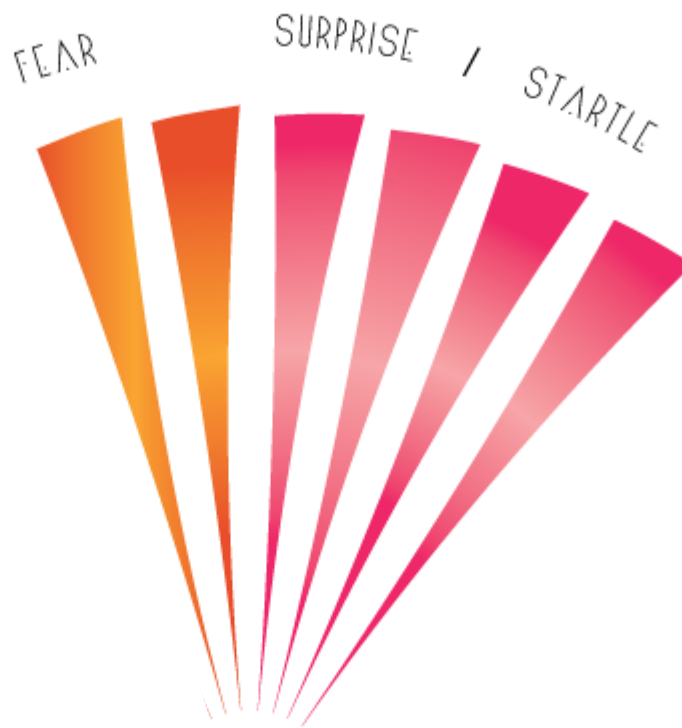
8 BASIC EMOTIONS (8种基本情绪)



escape / avoidance

attachment

8 BASIC EMOTIONS (8种基本情绪)



escape / avoidance

attachment

8 BASIC EMOTIONS (8种基本情绪)



escape / avoidance

attachment

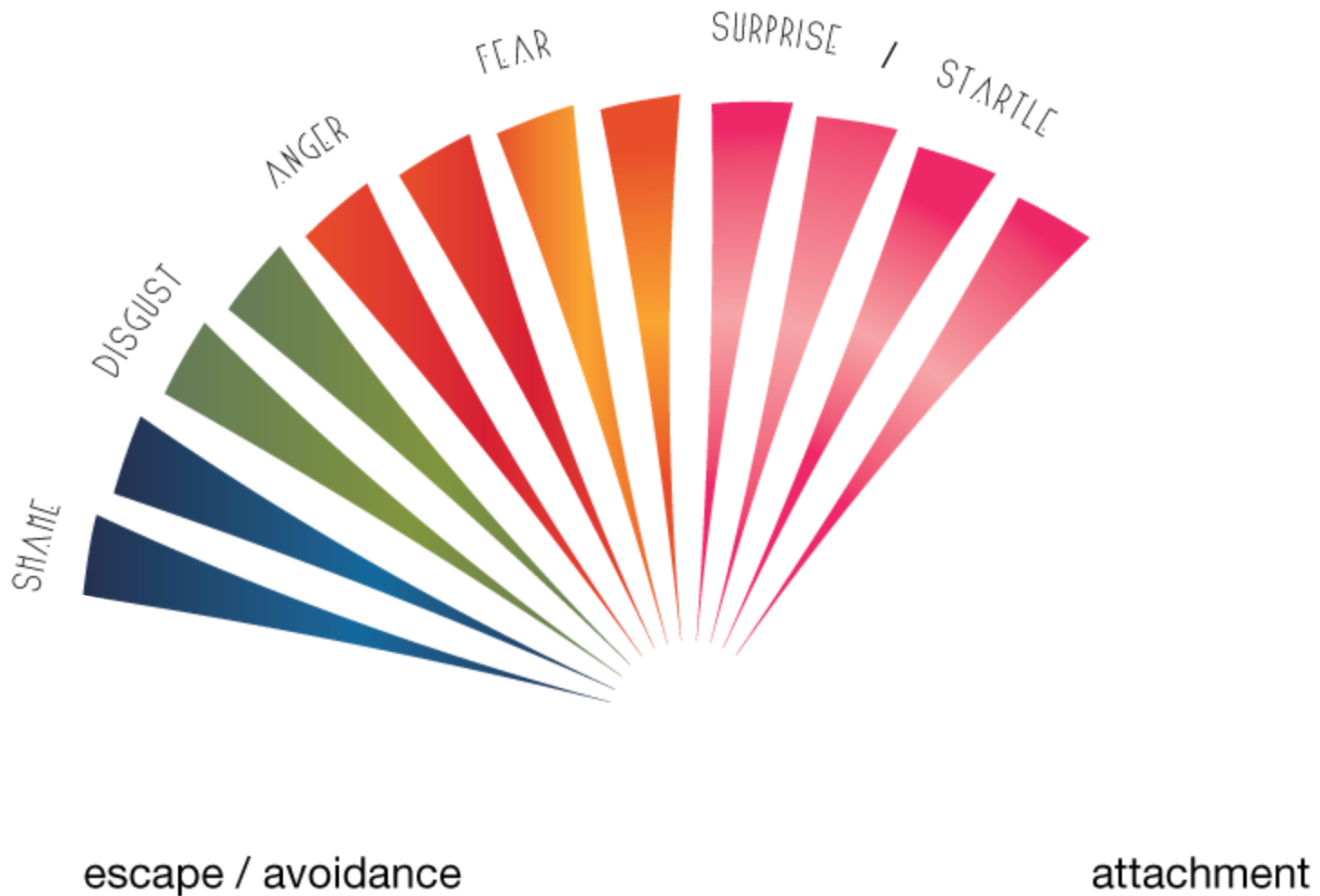
8 BASIC EMOTIONS (8种基本情绪)



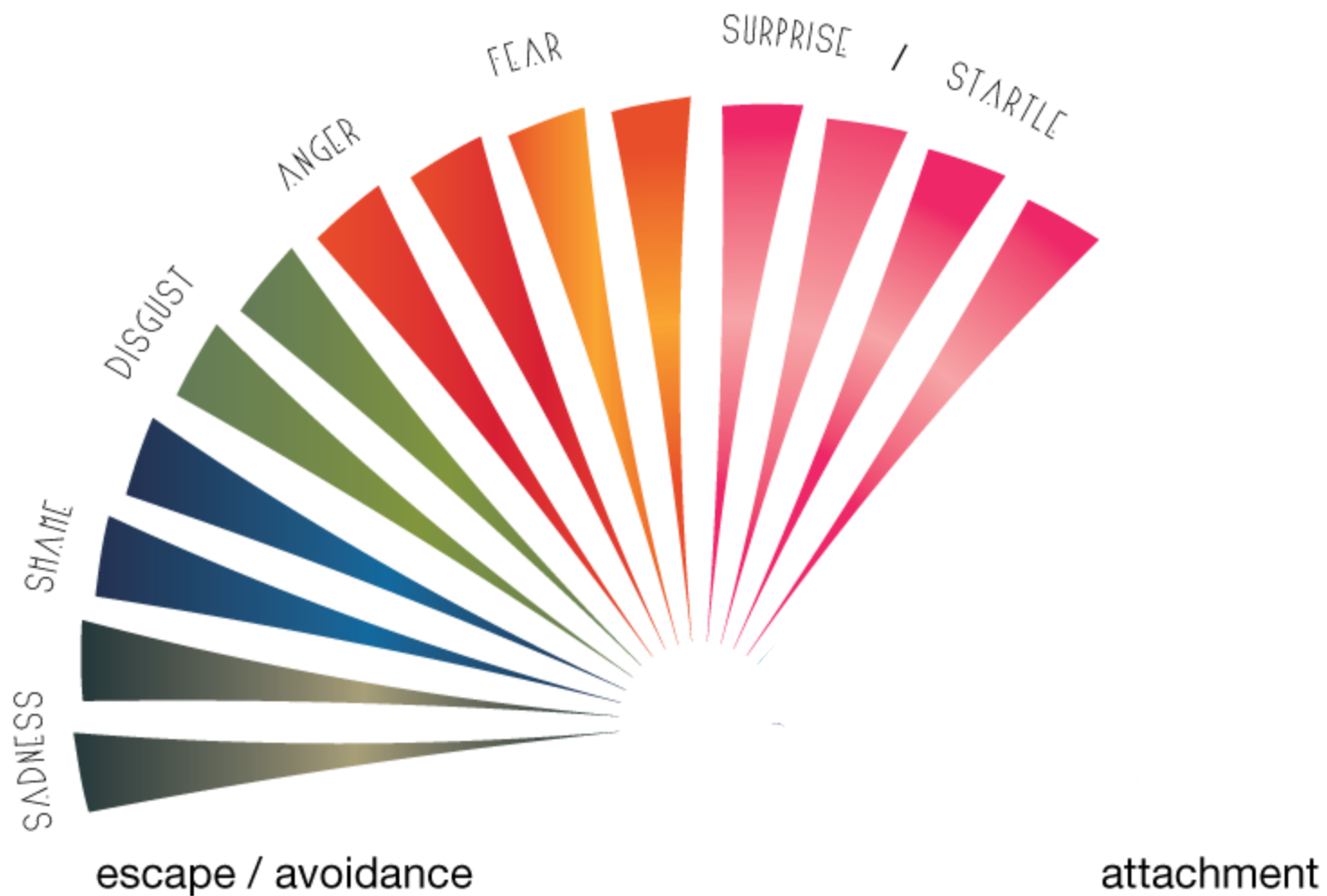
escape / avoidance

attachment

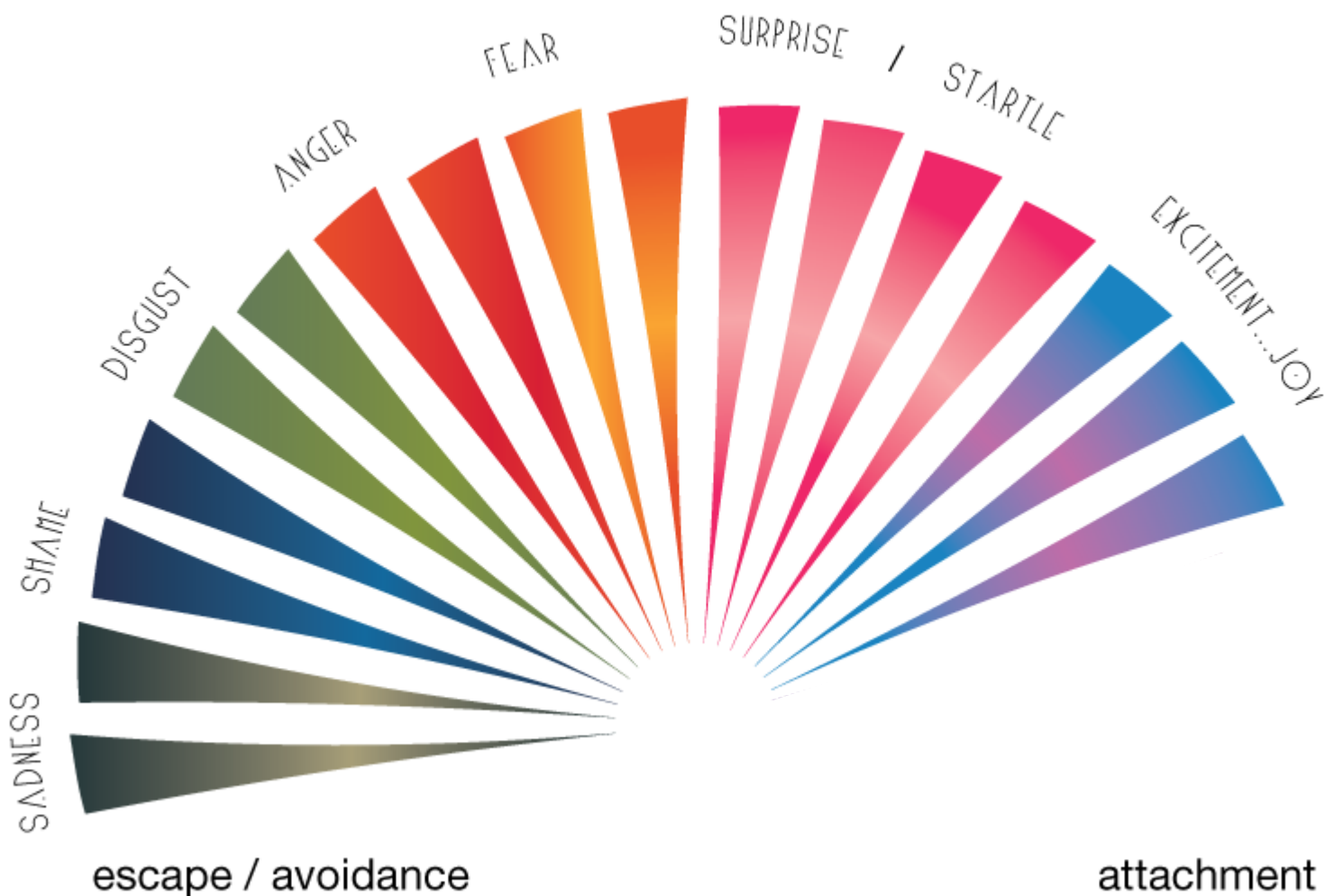
8 BASIC EMOTIONS (8种基本情绪)



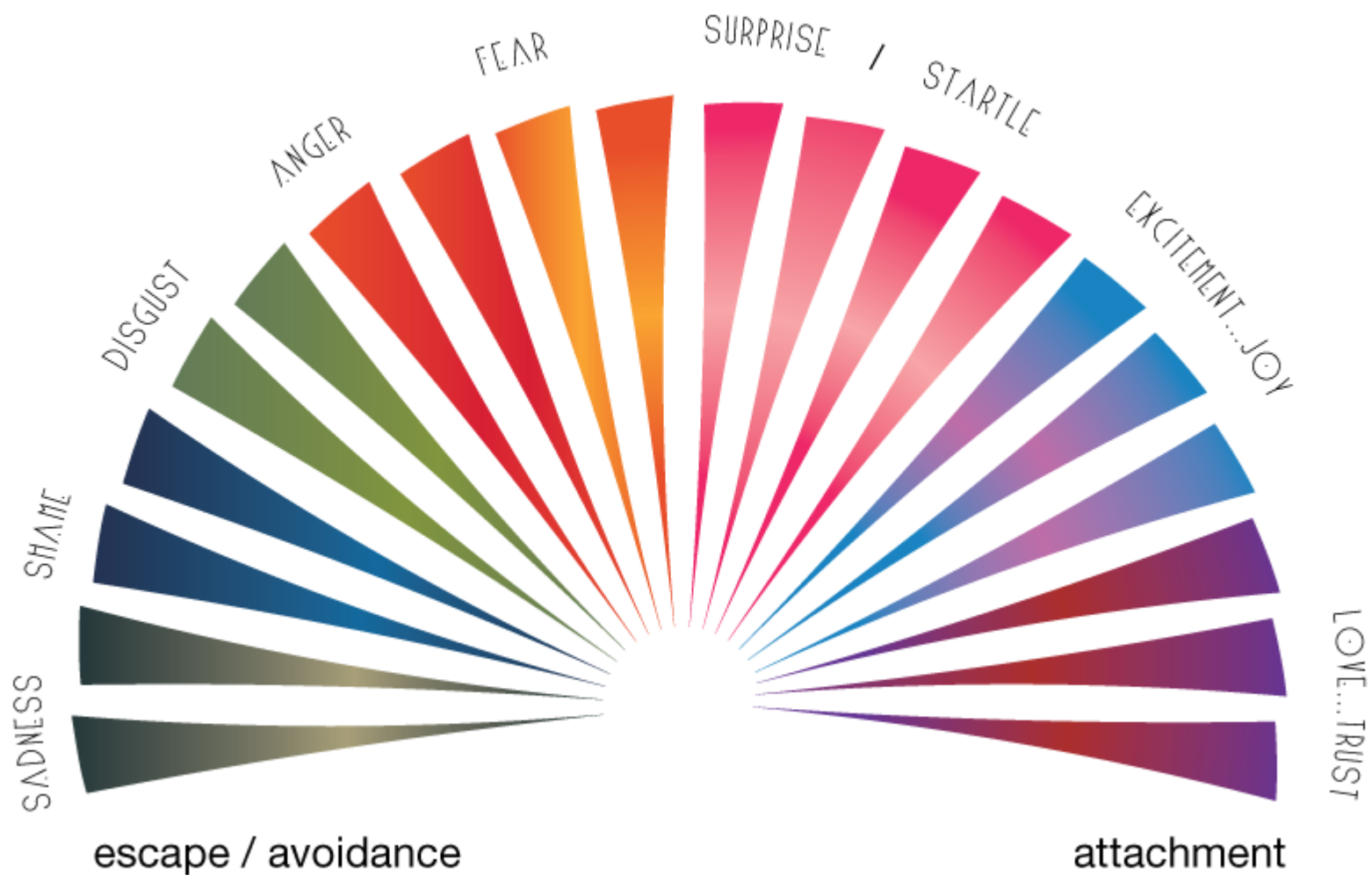
8 BASIC EMOTIONS (8种基本情绪)



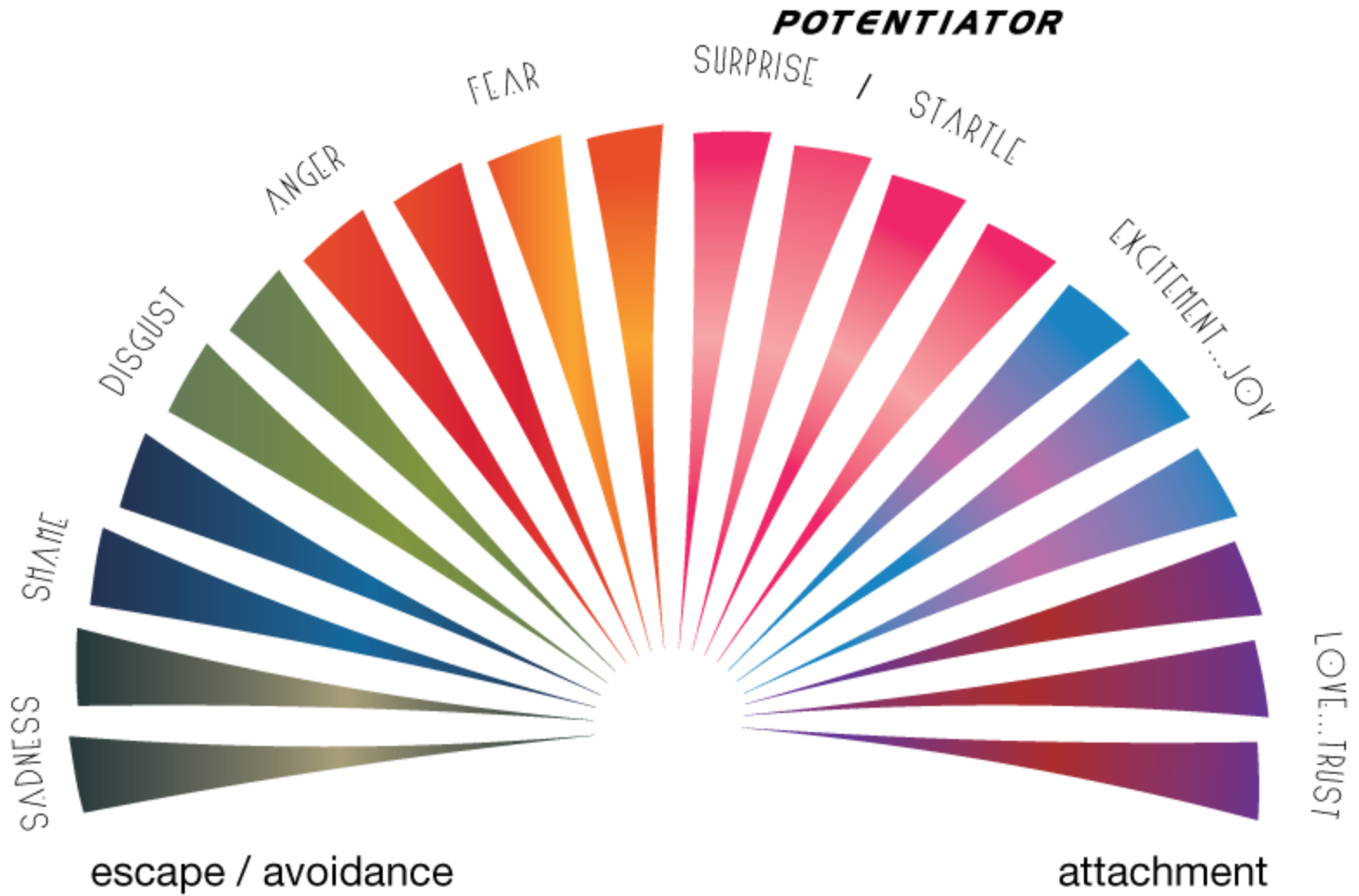
8 BASIC EMOTIONS (8种基本情绪)



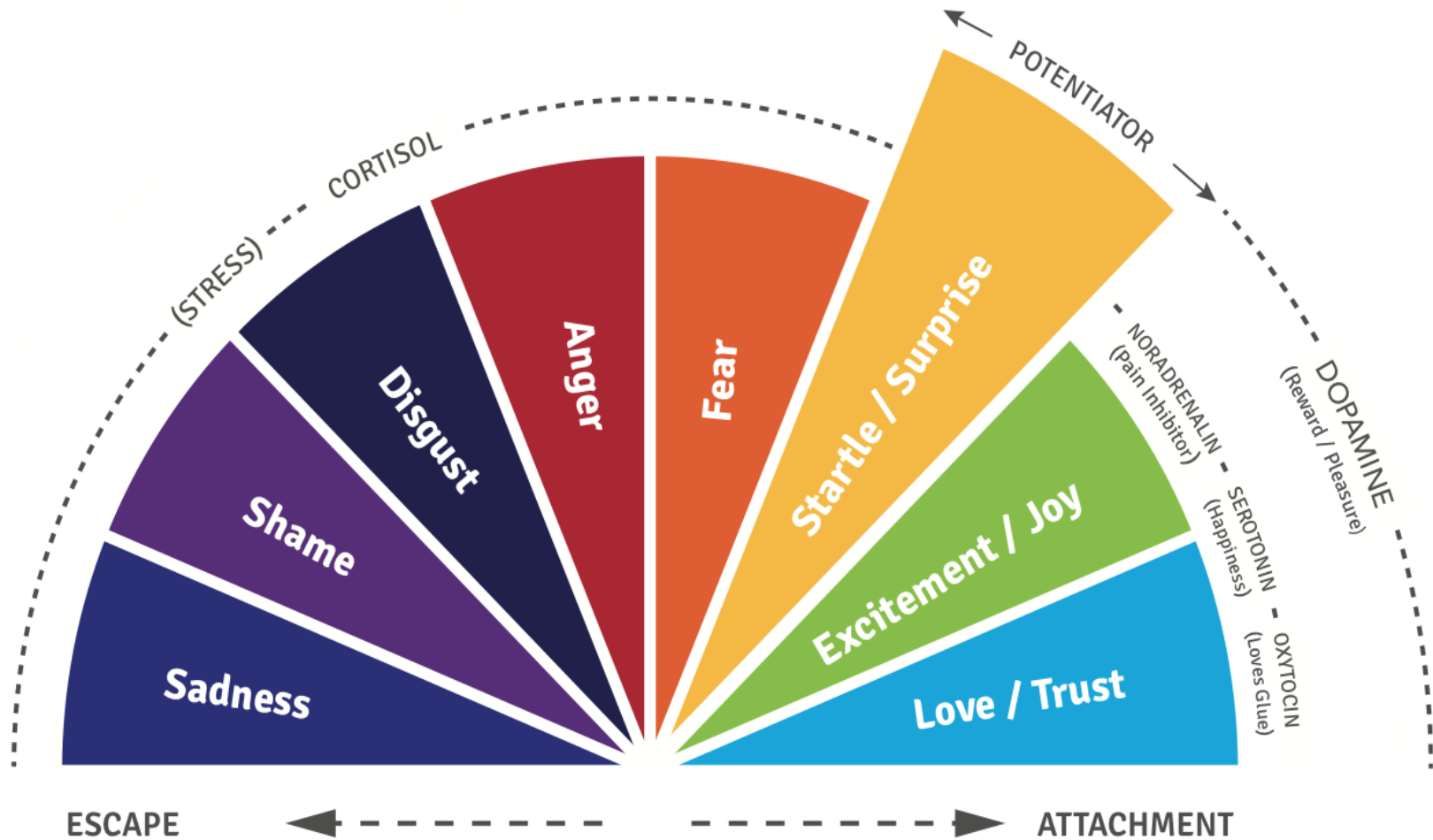
8 BASIC EMOTIONS (8种基本情绪)



8 BASIC EMOTIONS (8种基本情绪)

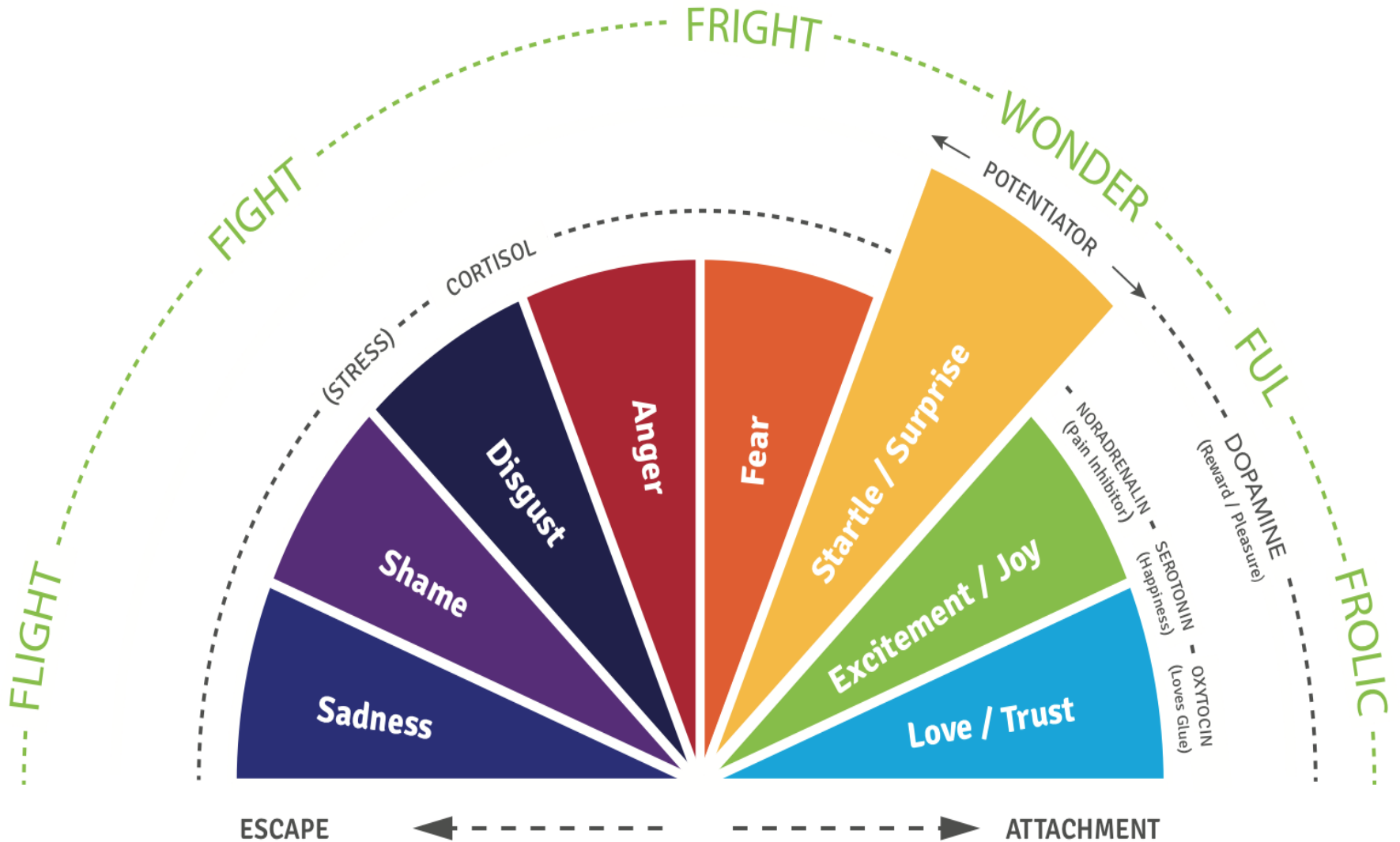


e-motions = Energy for Action = Motivation

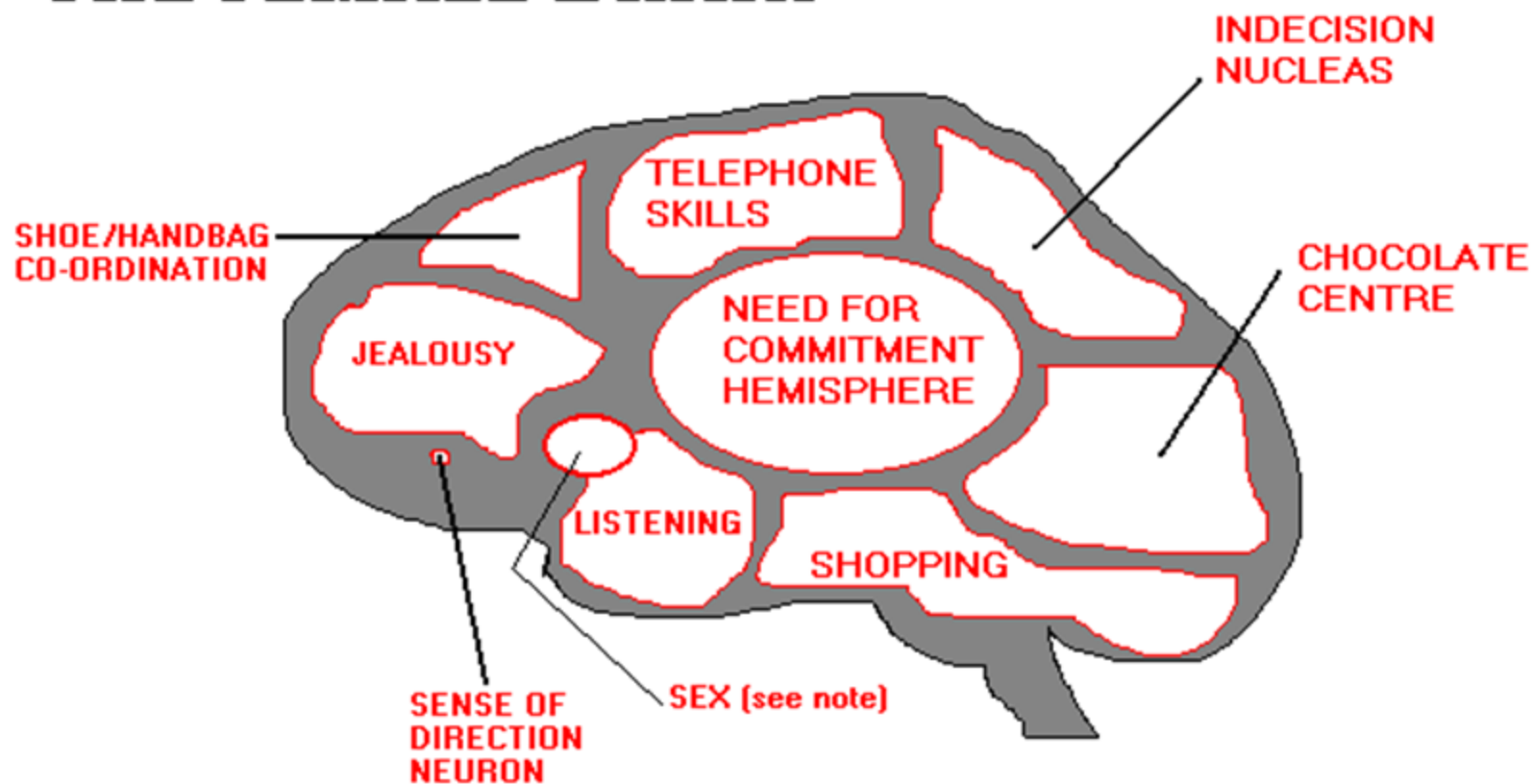


Developed by Tara Fennessy from © Brown, Coombs and Upton

e-motions = Energy for Action = Motivation

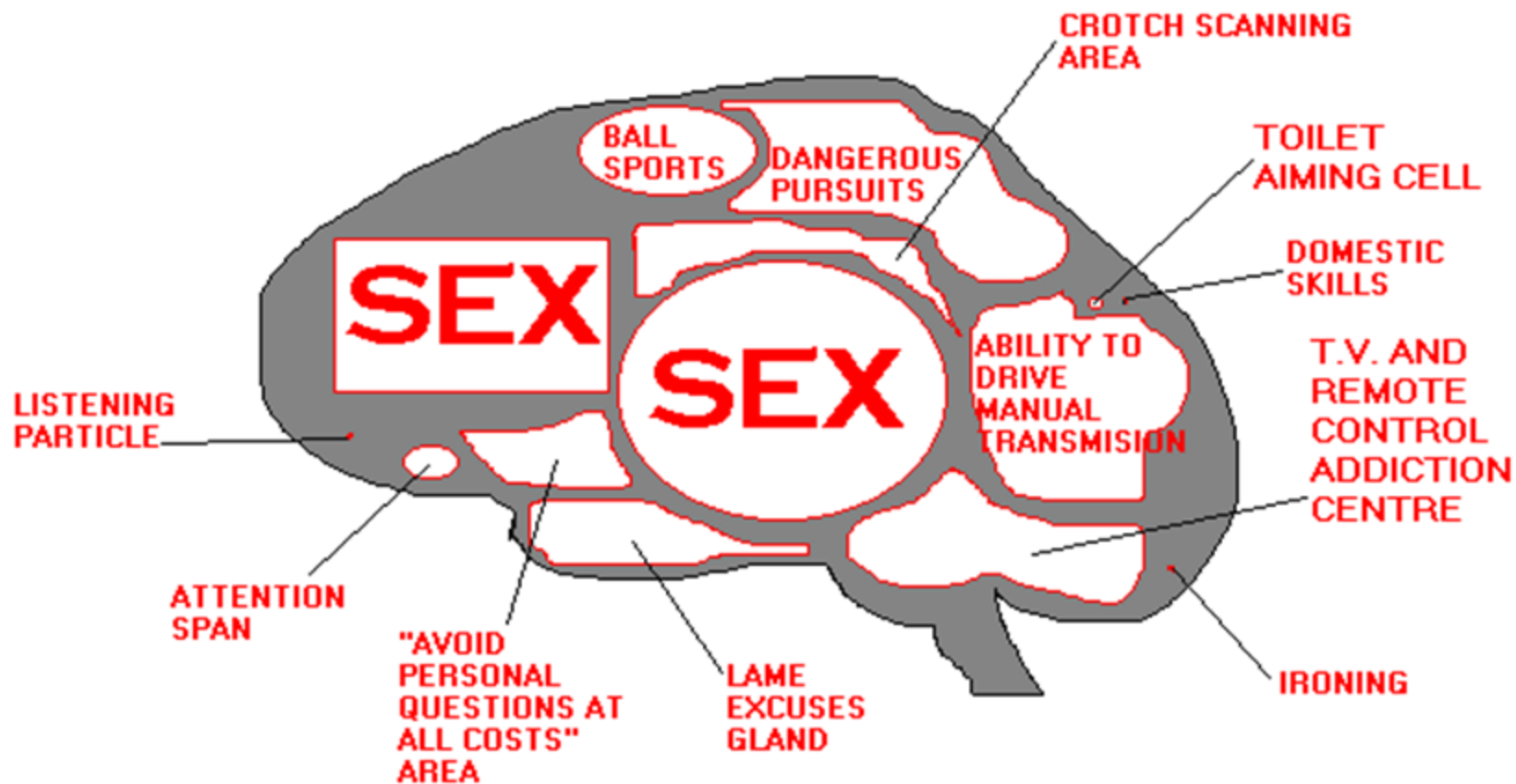


THE FEMALE BRAIN

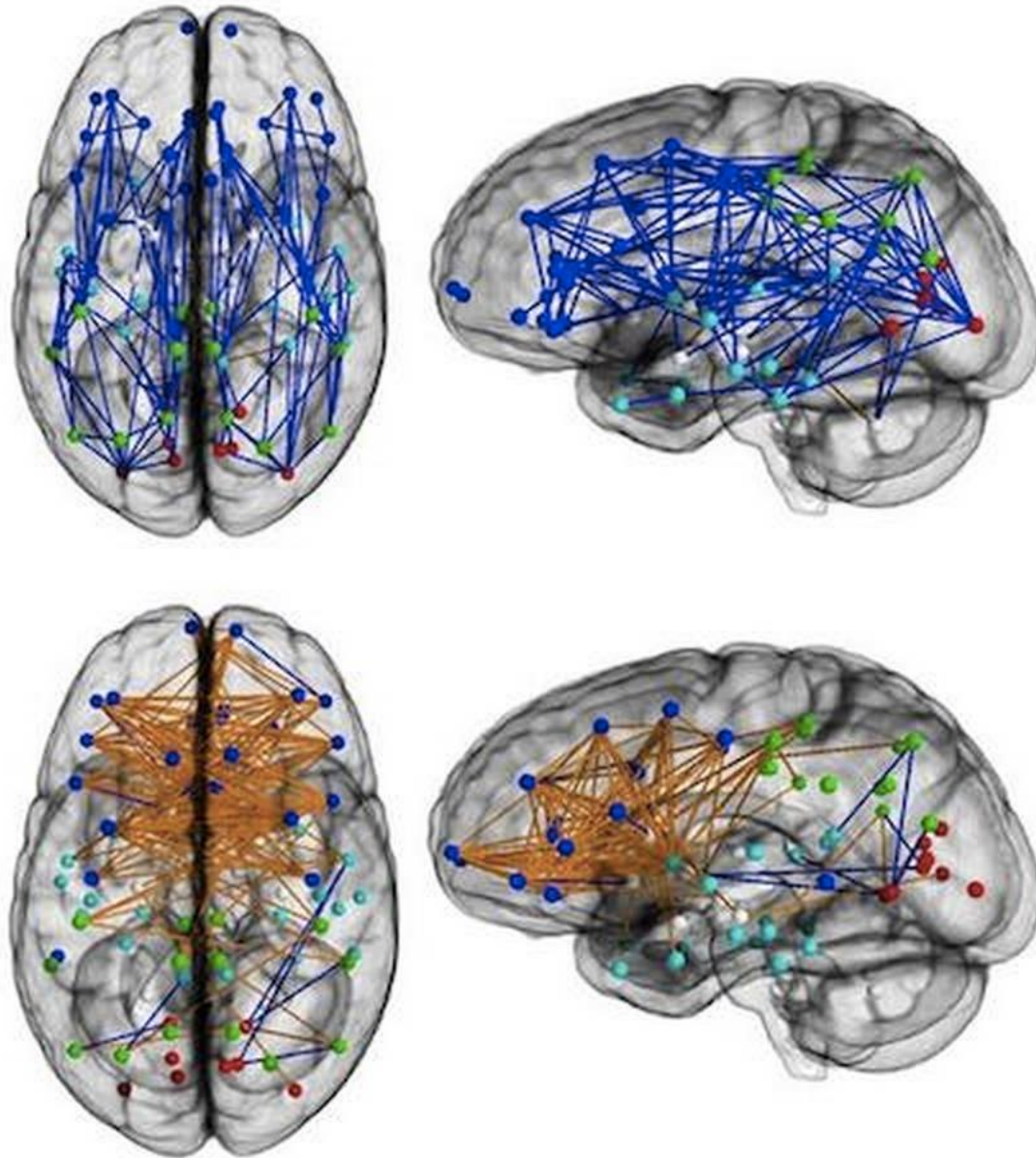


FOOTNOTE: Note how closely connected the small sex cell is to the listening gland.

THE MALE BRAIN



FOOTNOTE: the "Listening to children cry in the middle of the night" gland is not shown due to its small and underdeveloped nature. Best viewed under a microscope.



Researchers found increased connectivity in males from front to back within one hemisphere (upper) and left to right in females (lower).

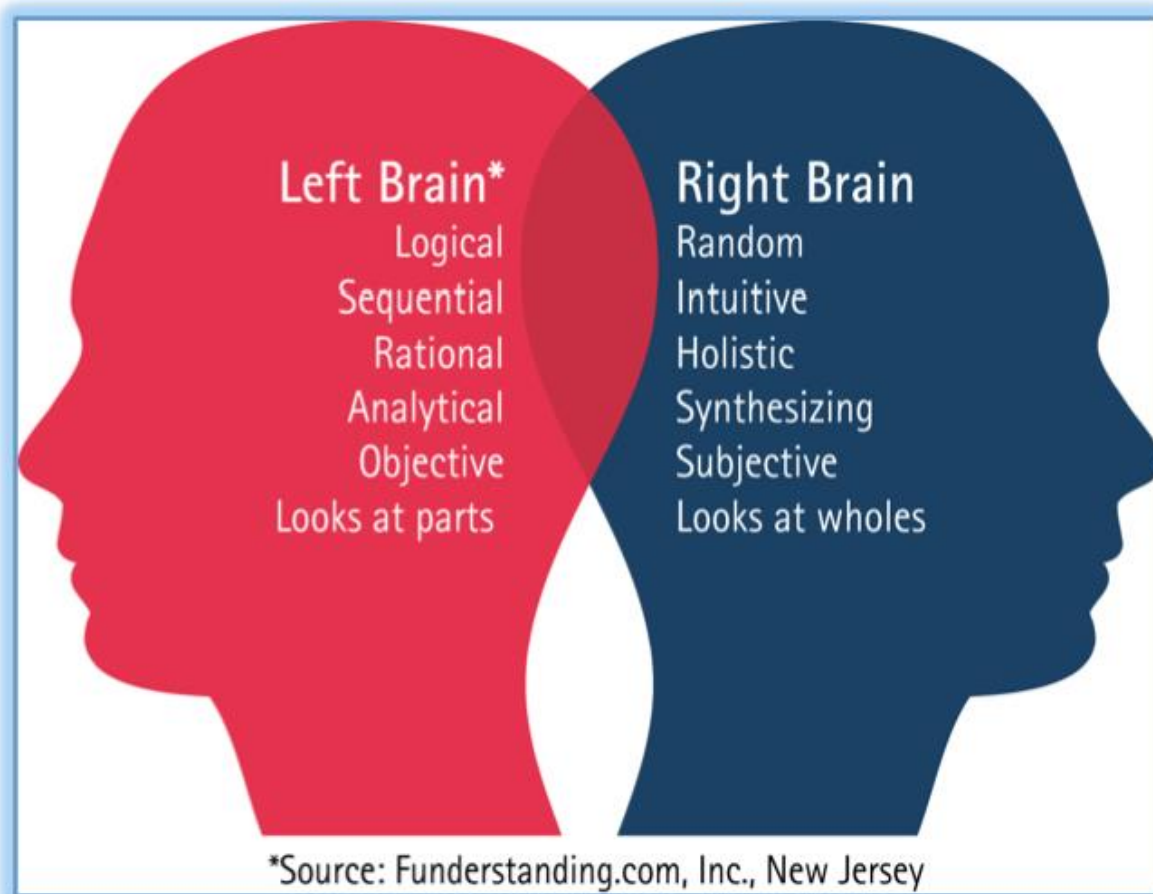
Credit: Ragini Verma, PhD, Proceedings of National Academy of Sciences

The Heat Of The Moment”





Illustration by David Plunkert



The limbic leader is known by having
the capacity to --

Connect

Be courageous

Be clever enough

Walk own talk

Inspire others into action

Be worth following