

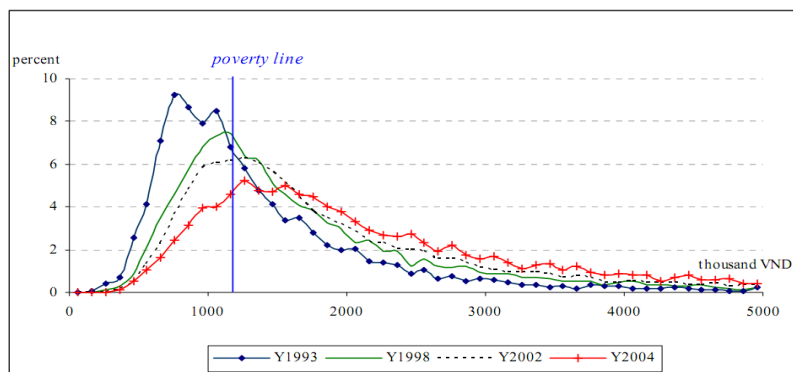
Chính sách phát triển

Bài giảng 11

Tăng trưởng và phân phối



Việt Nam: Phân phối chi tiêu



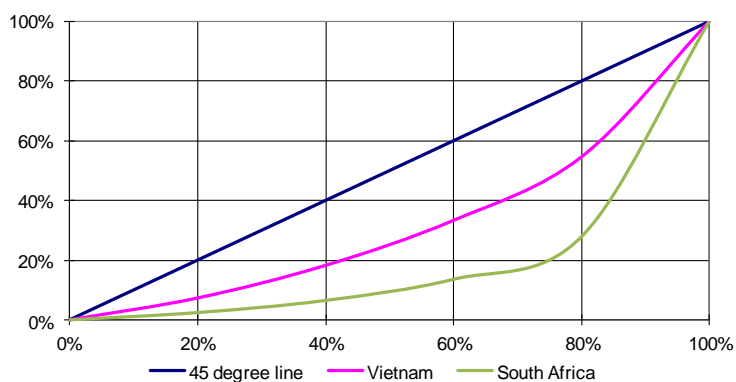
Nguồn: Nguyen Thang et al. "Poverty, Poverty Reduction and Poverty Dynamics in Vietnam," July 2006.

Tỉ trọng tích lũy thu nhập, Việt Nam 2004

| | Đáy 20% | Đáy 40% | Đáy 60% | Đáy 80% | 100% |
|-------------------|---------|---------|---------|---------|------|
| Việt Nam (2008) | 7.33% | 18.25% | 33.32% | 54.57% | 100% |
| Trung Quốc (2005) | 5.73% | 15.53% | 30.19% | 52.19% | 100% |
| Nam Phi (2006) | 2.45% | 6.51% | 13.59% | 27.49% | 100% |

Source: General Statistic Office

Đường Lorenz của Việt Nam (2008) và Nam Phi (2006)



Các hệ số Gini


| Quốc gia | Năm | Gini |
|--------------|------|------|
| Nam Phi | 2006 | 67 |
| Trung Quốc | 2005 | 42 |
| Ấn Độ | 2005 | 37 |
| In-đô-nê-xia | 2009 | 37 |
| Ma-lay-xia | 2009 | 46 |
| Phi-líp-pin | 2006 | 44 |
| Thái Lan | 2004 | 43 |
| Việt Nam | 2008 | 38 |

Những trục trặc trong số liệu thống kê bất bình đẳng

- Khung lấy mẫu: có được cập nhật?
- Qui mô mẫu: khác nhau giữa các vùng từ vài trăm đến 15,000
- Đo lường/so sánh thu nhập và tiêu dùng
- Không đại diện đầy đủ cho nhóm giàu và nghèo
- Không đại diện đầy đủ cho những người lưu chuyển
- Tính mùa vụ

Font size up | Font size down | Text version | Sitemap | Print | Send this page


Enter search term Search



UNITED NATIONS
UNIVERSITY

UNU-WIDER

World Institute for Development
Economics Research



Home | About us | Events | Research | Publications

Media | Opportunities | FAQ

You are here: Research / Database (WIID)

Research

Current programme

Projects by start date +

Past projects by theme +

Database (WIID) -

Download

WIID Documentation

Income distribution links

Frequently asked questions

Software tools

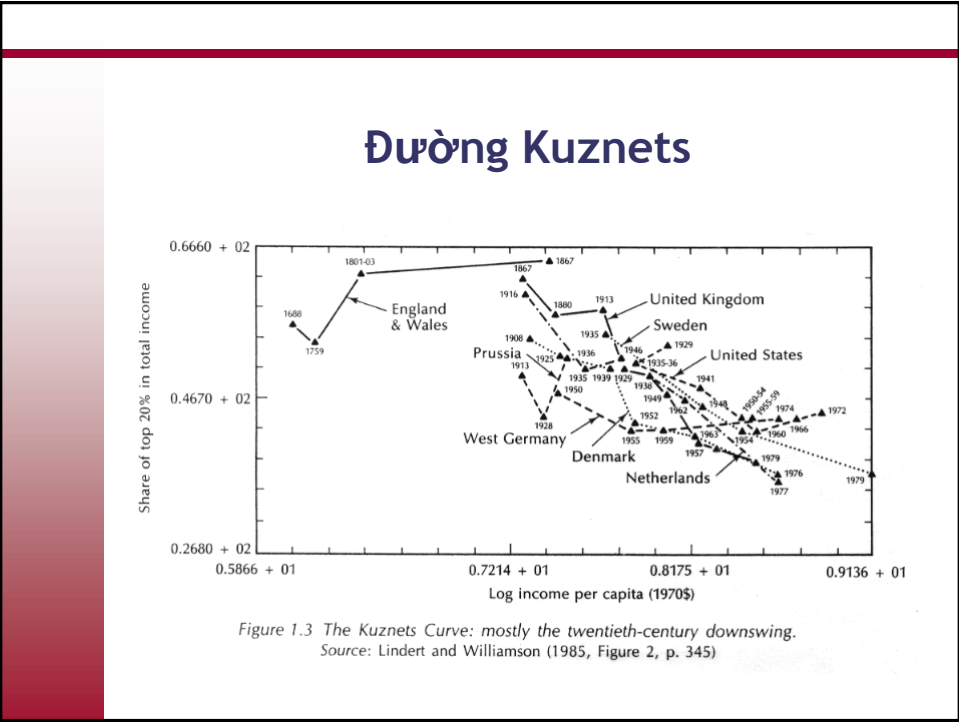
Library +

World Income Inequality Database V2.0c May 2008

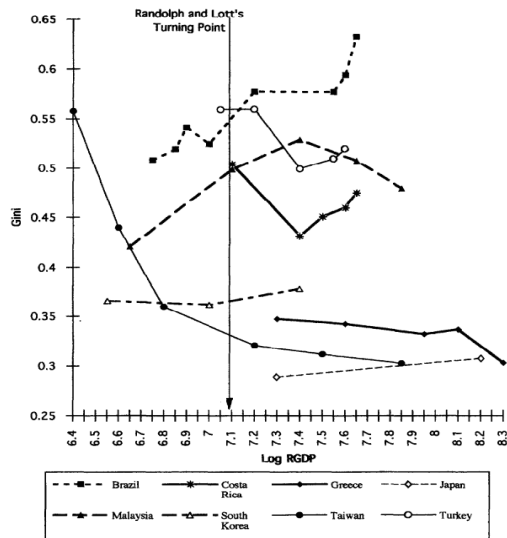
The UNU-WIDER World Income Inequality Database (WIID) collects and stores information on income inequality for developed, developing, and transition countries. The database and its documentation are available on this website.

WIID2 consists of a checked and corrected WIID1, a new update of the Deininger & Squire database from the World Bank, new estimates from the Luxembourg Income Study and Transmonet, and other new sources as they have become available. WIID2a contains fewer points of data than WIID1 as some overlaps between the old Deininger & Squire data and estimates included by WIDER have been eliminated along with some low quality estimates adding no information. In addition to the Gini coefficient and quintile and decile shares, survey means and medians along with the income shares of the richest 5% and the poorest 5% have been included in the update. In addition to the Gini coefficient reported by the source, a Gini coefficient calculated using a new method developed by Tony Shorrocks and Guang Hua Wan is reported. The method estimates the Gini coefficient from decile data almost as accurately as if unit record data

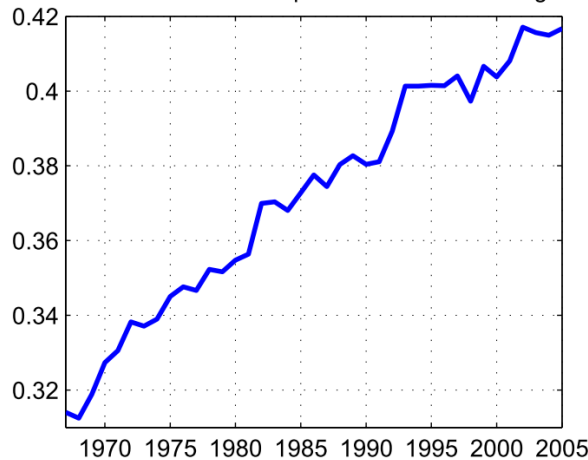
http://www.wider.unu.edu/research/Database/en_GB/database/



Bowman 1997: Thiên lệch trong chọn lọc



Hệ số Gini thu nhập hộ dân Mỹ, 1970-2005



Hệ số Gini thu nhập hộ dân Trung Quốc 1989-2004

| | 1989 | 2004 |
|----------------|------|------|
| Tổng | 0.35 | 0.48 |
| Đô thị | 0.25 | 0.45 |
| Nông thôn | 0.40 | 0.49 |
| Duyên hải | 0.37 | 0.50 |
| Trong đất liền | 0.33 | 0.43 |

Source: Xubei Luo and Nong Zhu (2008)
<http://library1.nida.ac.th/worldbank/fulltext/wps04700.pdf>