

Development Policy Lecture 13

Education

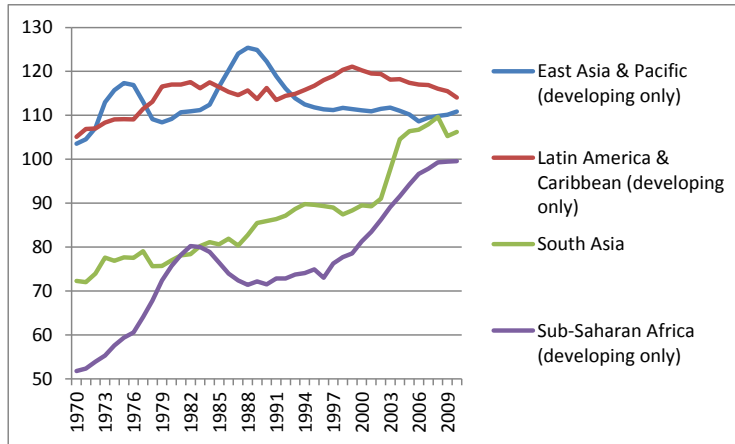


Theodore W. Schultz

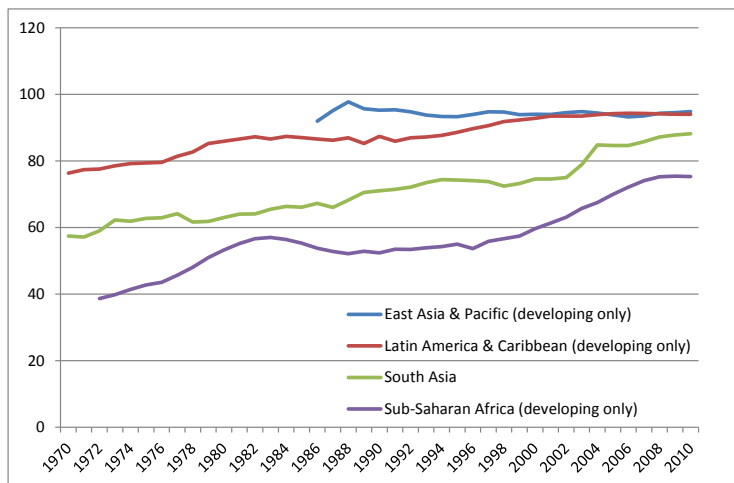
- Never attended high school, went to college against the wishes of his parents.
- “Investment in Human Capital,” *American Economic Review*, 1961.
- Viewing knowledge and skills as assets that has a rate of return like capital, he paved the way for new growth theory.



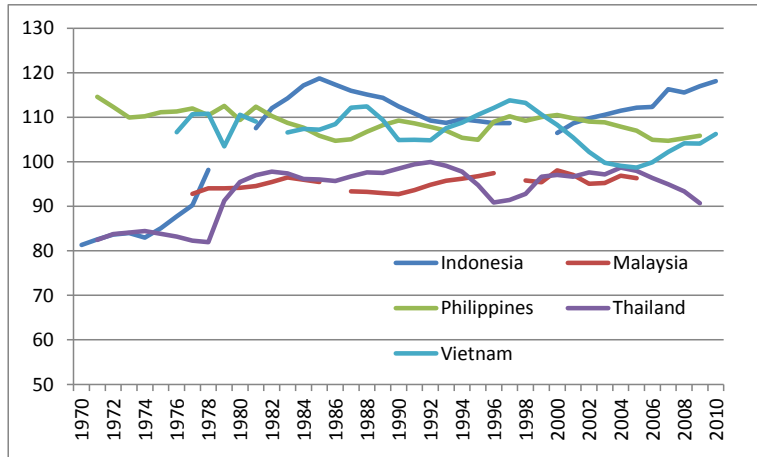
Gross primary school enrollment



Net primary school enrollment

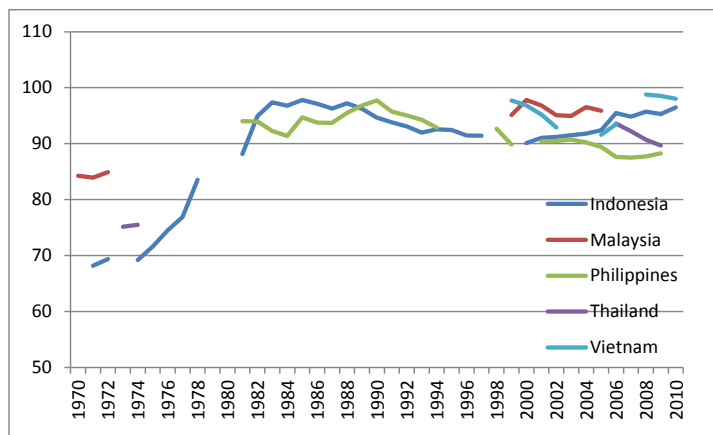


Gross primary school enrollment, Southeast Asia



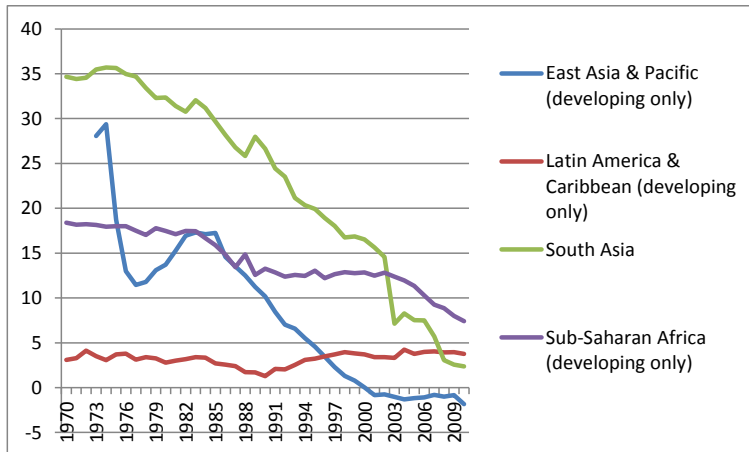
Source: Wilkinson and Pickett 2009

Net primary school enrollment, Southeast Asia



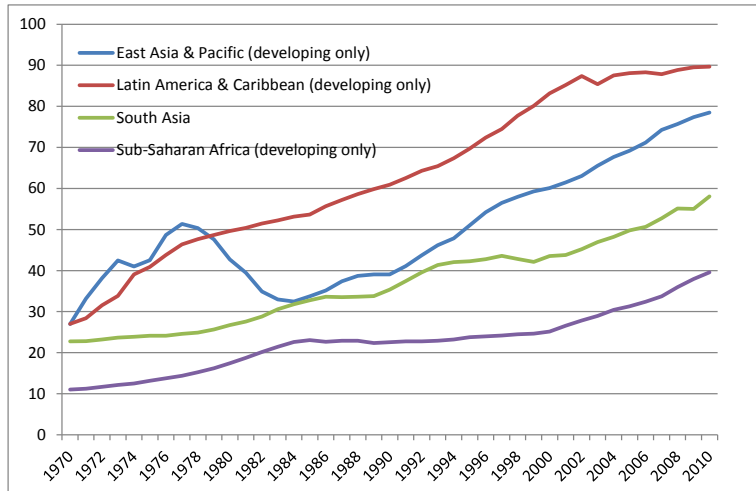
Source: Wilkinson and Pickett 2009

Difference between boy and girls' gross primary school enrollment rates



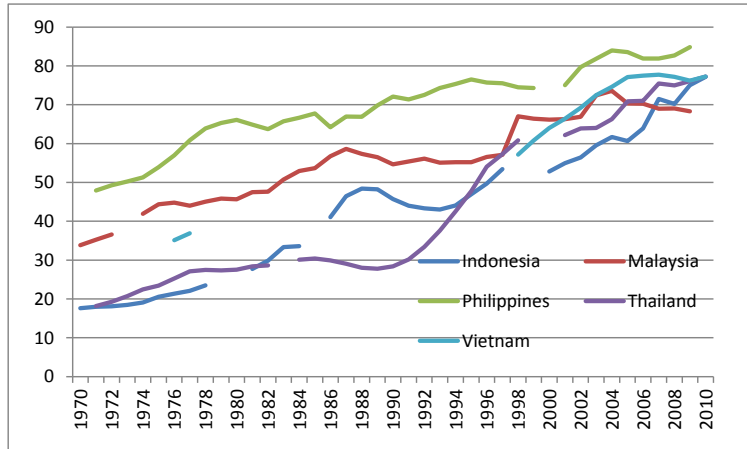
Source: Wilkinson and Pickett 2009

Gross secondary school enrollment rates



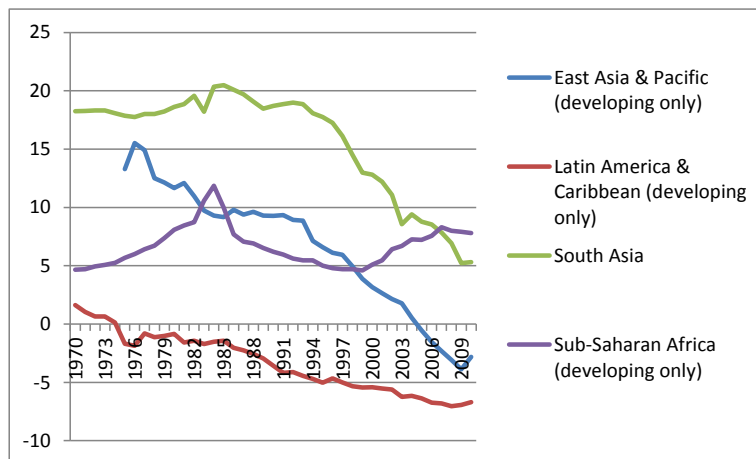
Source: Wilkinson and Pickett 2009

Gross secondary school enrollment rates, Southeast Asia

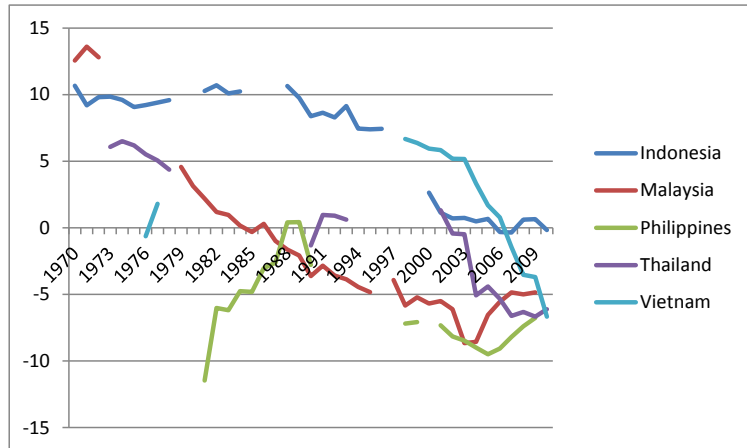


Source: Wilkinson and Pickett 2009

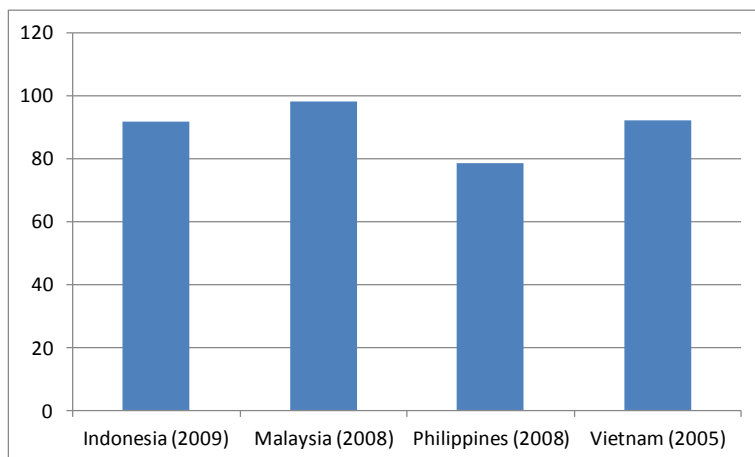
Difference between boys and girls' enrollment rates, gross secondary



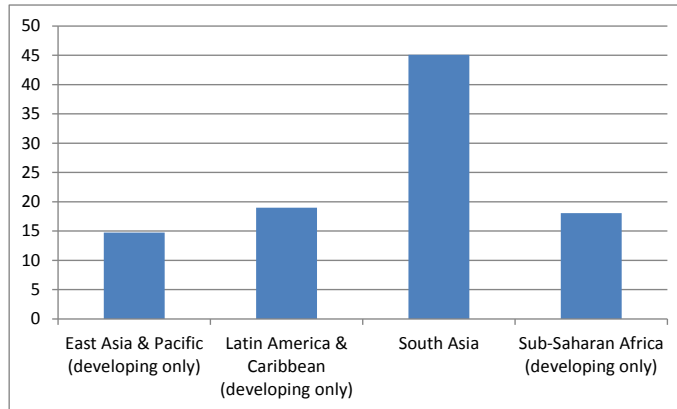
Difference between boys and girls' enrollment rates, gross secondary



Persistence to grade 5

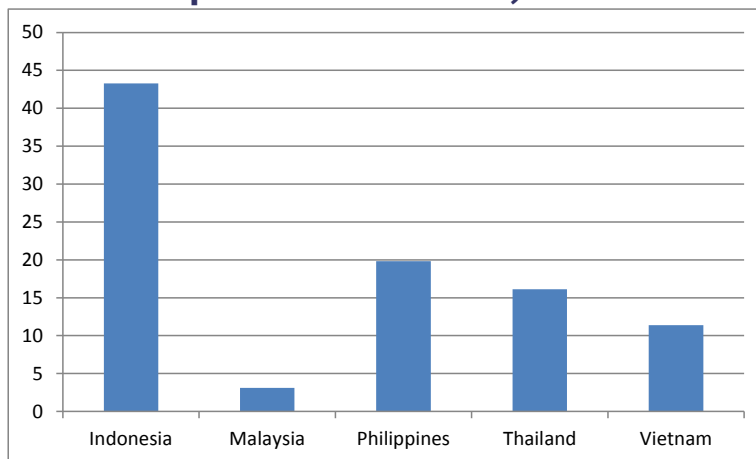


Share of secondary school students in private schools, 2010*

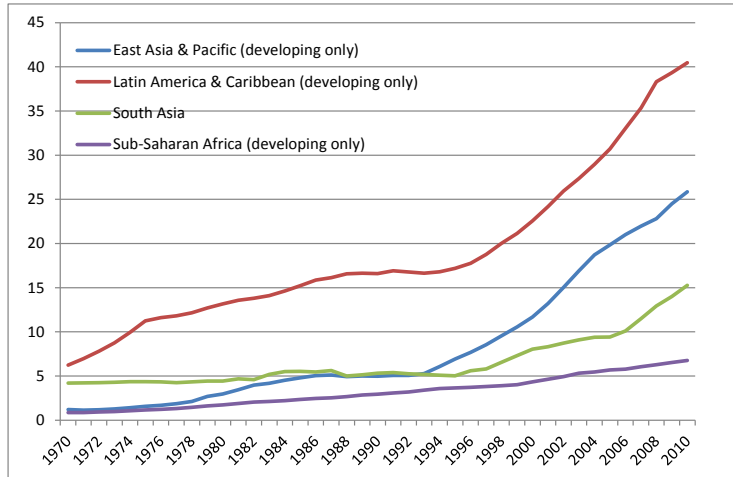


*South Asia data from 2010

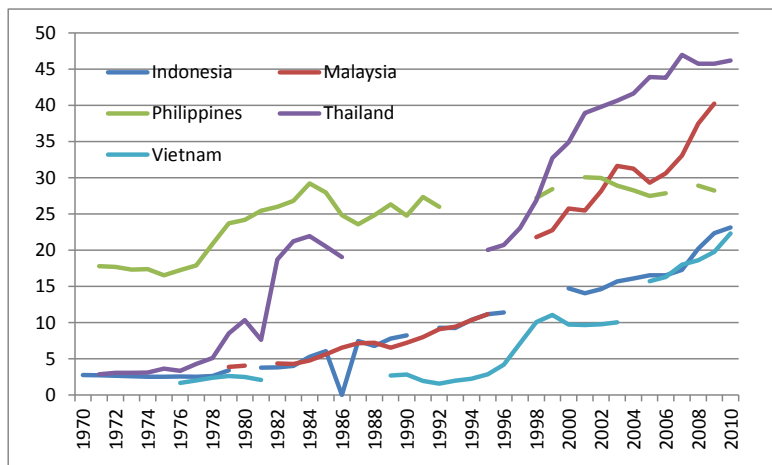
Share of secondary school students in private schools, 2010*



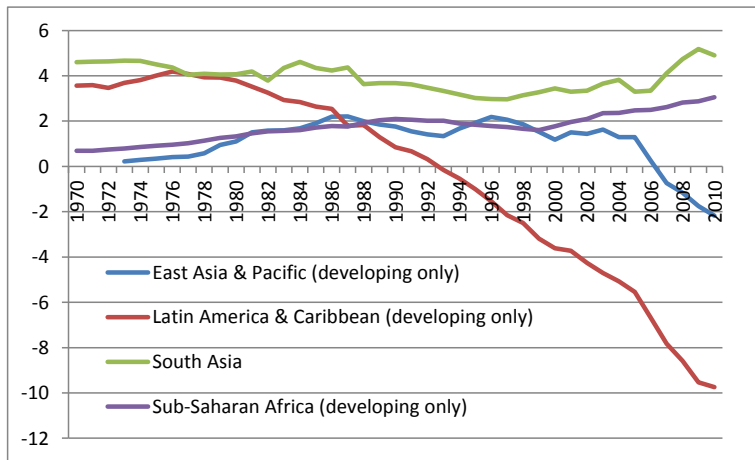
Gross tertiary enrollment rates



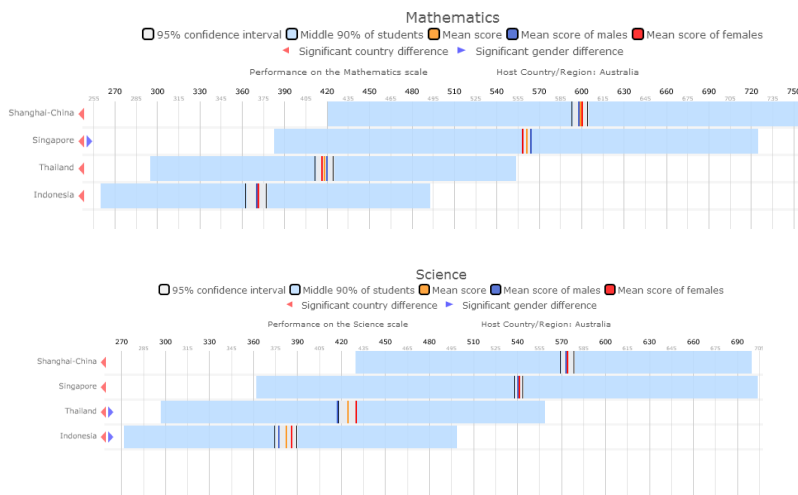
Gross tertiary enrollment rates



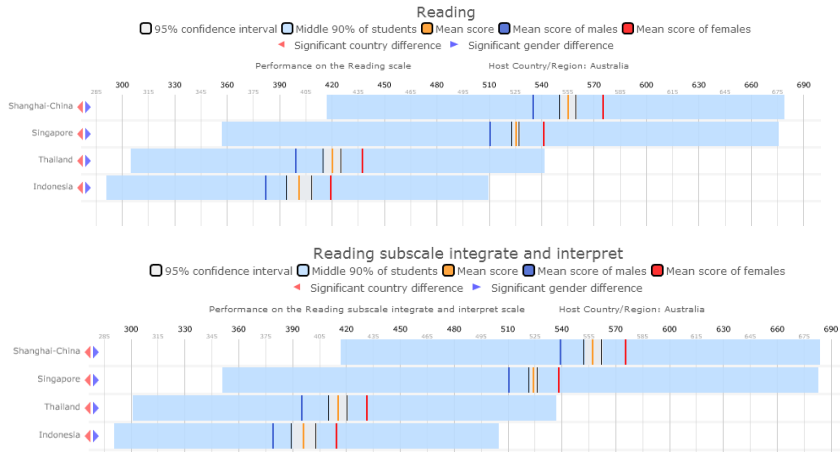
Gender gap in tertiary education



PISA scores 2009



PISA scores 2009

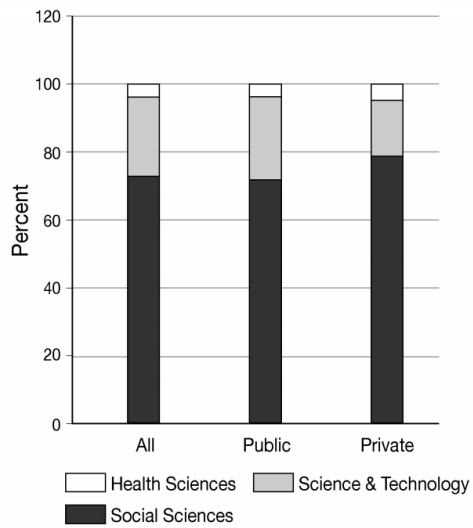


First university degrees, 2008 or most recent year

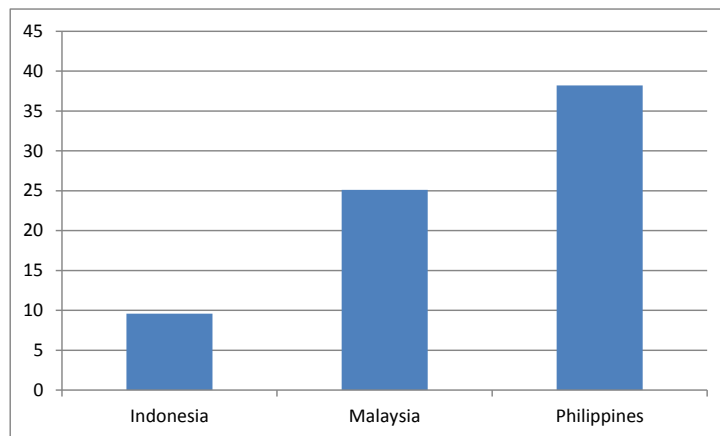
Region/country/economy	Field of first university degree		Percent		
	All fields	All S&E fields	S&E	Natural sciences	Engineering
World total	14,854,840	5,000,700	33.7	11.7	13.2
United States	1,580,413	496,168	31.4	11.2	4.4
EU	2,675,270	932,898	34.9	11.5	12.1
Japan	555,690	336,815	60.6	6.3	17.1
China	2,256,783	1,143,338	50.7	13.2	31.2
India (2003)	2,052,197	463,186	22.6	16.3	6.2
Malaysia (2007)	93,384	43,754	46.9	22.2	18.6
Philippines (2004)	350,529	86,690	24.7	7.5	12.9
Singapore ^d	11,472	5,234	45.6	11.7	33.9
South Korea	315,204	129,641	41.1	12.0	24.5
Taiwan	230,198	92,636	40.2	13.0	24.2

Source: National Science Foundation

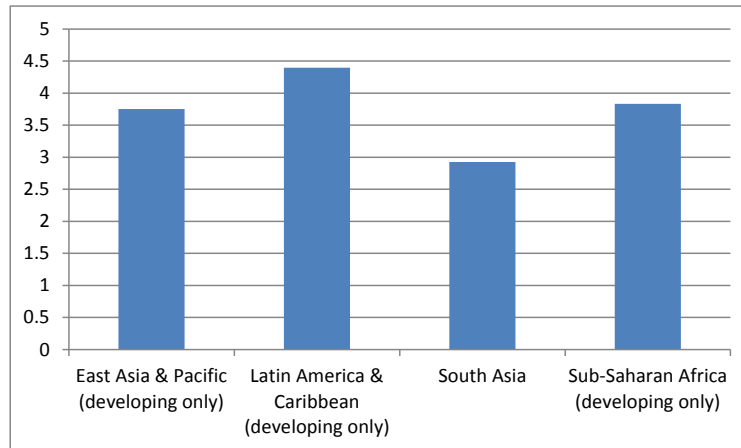
Fields of study, Thailand universities (2007)



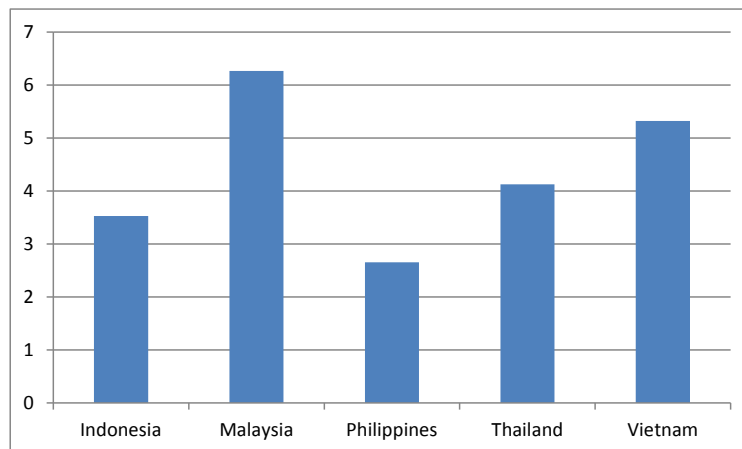
Unemployed with tertiary education as share of total unemployed (2008)



Public spending on education as share of GDP(2007)



Public spending on education as share of GDP(2008)



Pritchett 1996: Growth of GDP per capita and human capital per worker

